



USB to cctalk Converter

User Manual

AMPASA

Version 2.0

2008

Index

1 USB interface for cctalk	1
Power supply diagrams	2
2 Installing USB Interface for ccTalk drivers	3
2.1 Configuration hardware of Communication Port	11

1 USB interface for cctalk

The USB interface for ccTalk permits to connect a device which operates according to the ccTalk protocol to the USB port of a Personal Computer.

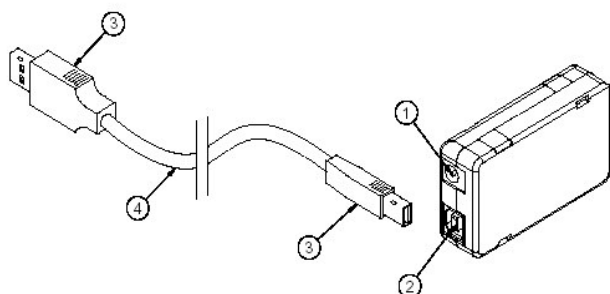


fig. 1

- 1 = Jack for ccTalk peripheral power supply
- 2 = USB connector
- 3 = USB connector
- 4 = USB 1800 mm harness

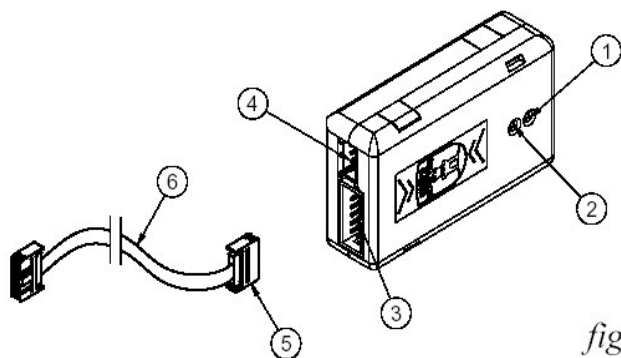


fig. 2

- 1 = Yellow LED indicating ccTalk power supply
- 2 = Green LED indicating USB power supply
- 3 = ccTalk Flat 10-ways connector
- 4 = Modu2 2x4 ways connector
- 5 = Flat 10-ways connector
- 6 = 1800 mm harness

Warning: before connecting the interface to the Personal Computer, it is necessary to download the suitable drivers, which are available on Azkoyen website page. Moreover it is necessary that you have a power supply: +24V or +12V/1A; Jack connector of 5,5mm diameter and 2,1mm VCC central pin.

The interface is equipped with a USB connector for the connection to the Personal Computer and with a Flat 10-ways connector for the connection to a ccTalk peripheral.



Furthermore there is a jack which provides the power supply to the ccTalk peripheral (12 volt, 24 volt tollerant; fig. 3) and a Modu2 connector with 2 inputs and 2 optional outputs for the connection to further peripherals (fig. 4). The interface signals the presence of a self-powered USB connection by the lighting up of the green LED and the connection to the ccTalk peripheral power supply by the lighting up of the yellow LED.

1.1 Power supply diagrams

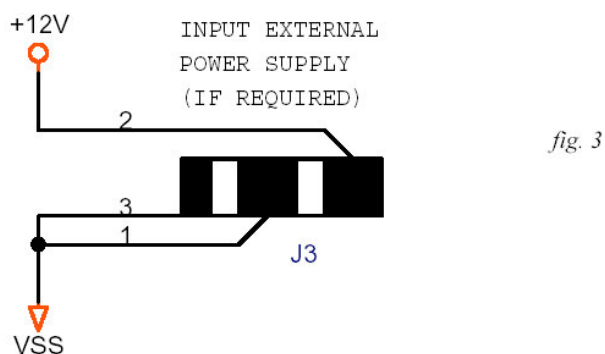


fig. 3

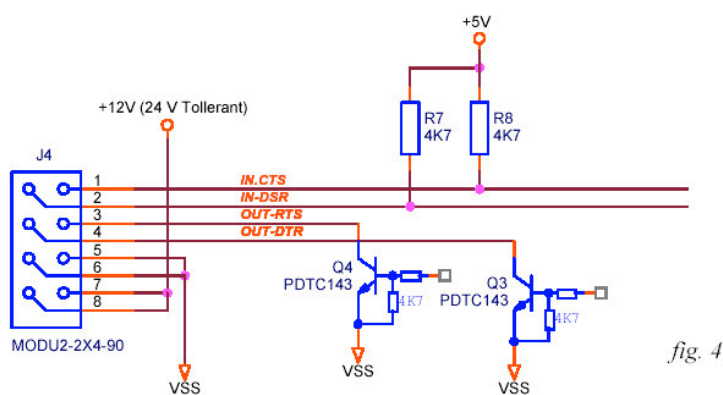


fig. 4



2 Installing USB Interface for ccTalk drivers

The purpose of this document is to provide users of USB Interface for ccTalk with a simple procedure for installing drivers for their devices under Windows XP.

This interface can be installed with one of two sets of drivers.

The first driver type provides direct access to the device. The second driver type is the virtual COM port driver. This driver emulate a standard PC COM port. These can be communicated with in the same manner as any other COM port on the PC.

Under Windows XP, the Found New Hardware Wizard should be used to install devices when they are connected to the PC for the first time as this is the recommended procedure for reliable device operation.

To install the drivers for a Interface for cctalk under Windows XP and XP SP1, follow the instructions below:

Download the latest available drivers from the AZKOYEN website and unzip them to a location on your PC.

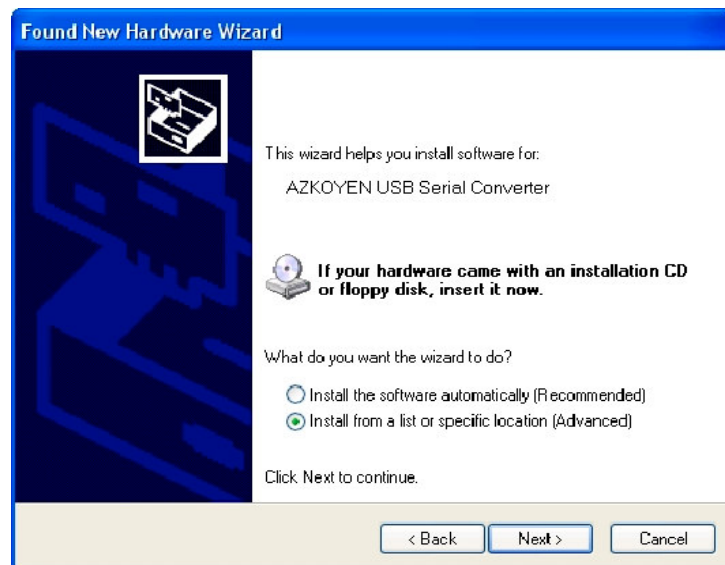
If you are running Windows XP or Windows XP SP 1, temporarily disconnect your PC from the Internet. This can be done by either removing the network cable from your PC or by disabling your network card by going to the "Control Panel\Network and Dial-Up Connections", right-clicking on the appropriate connection and selecting "Disable" from the menu. The connection can be re-enabled after the installation is complete. This is not necessary under Windows XP SP 2 if configured to ask before connecting to Windows Update. Windows XP SP 2 can have the settings for Windows Update changed through "Control Panel\System" then select the "Hardware" tab and click "Windows Update".

Connect the device to a spare USB port on your PC. This will launch the Windows Found New Hardware Wizard. If there is no available Internet connection or Windows XP SP 2 is configured to ask before connecting to Windows Update, the screen below is shown. Select "No, not this time" from the options available and then click "Next" to proceed with the installation.

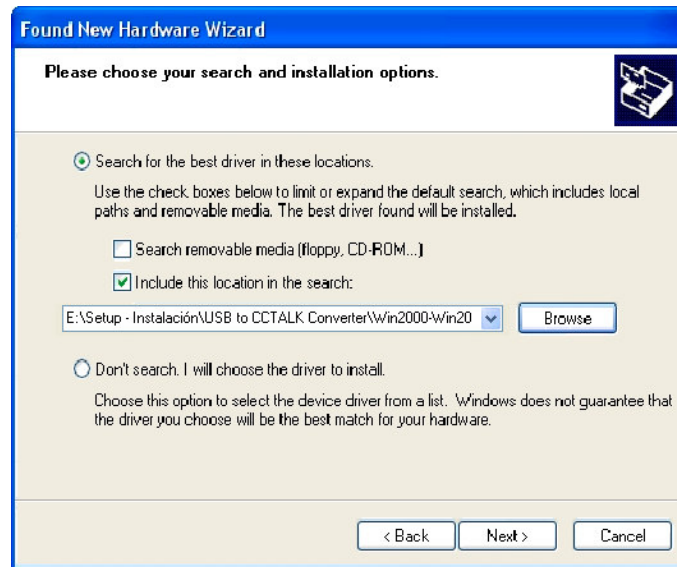
If there is an available Internet connection, Windows XP will silently connect to the Windows Update website and install any suitable driver it finds for the device in preference to the driver manually selected.



Select "Install from a list or specific location (Advanced)" as shown below and then click "Next".



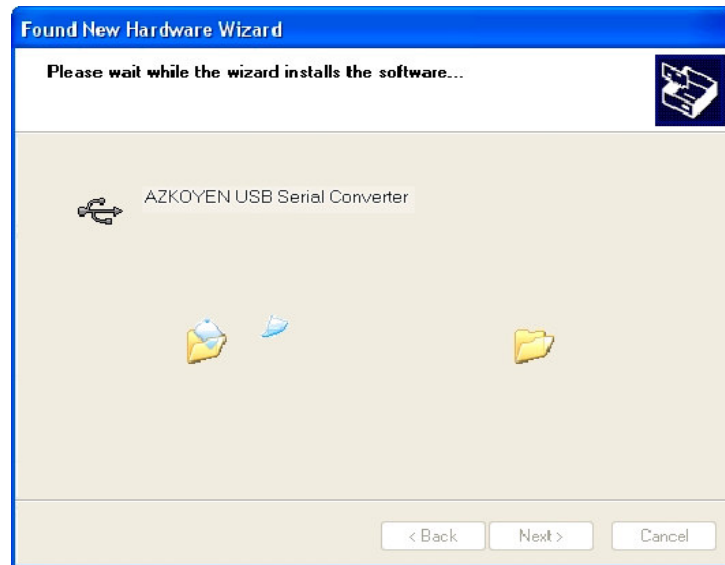
Select "Search for the best driver in these locations" and enter the file path in the combo-box ("D:\ Setup - Instalación\ USB to CCTALK Converter\ Win2000-Win2003-WinXP" in the example below) or browse to it by clicking the browse button. Once the file path has been entered in the box, click next to proceed.



If Windows XP is configured to warn when unsigned (non-WHQL certified) drivers are about to be installed, the following screen will be displayed. Click on "Continue Anyway" to continue with the installation. If Windows XP is configured to ignore file signature warnings, no message will appear.



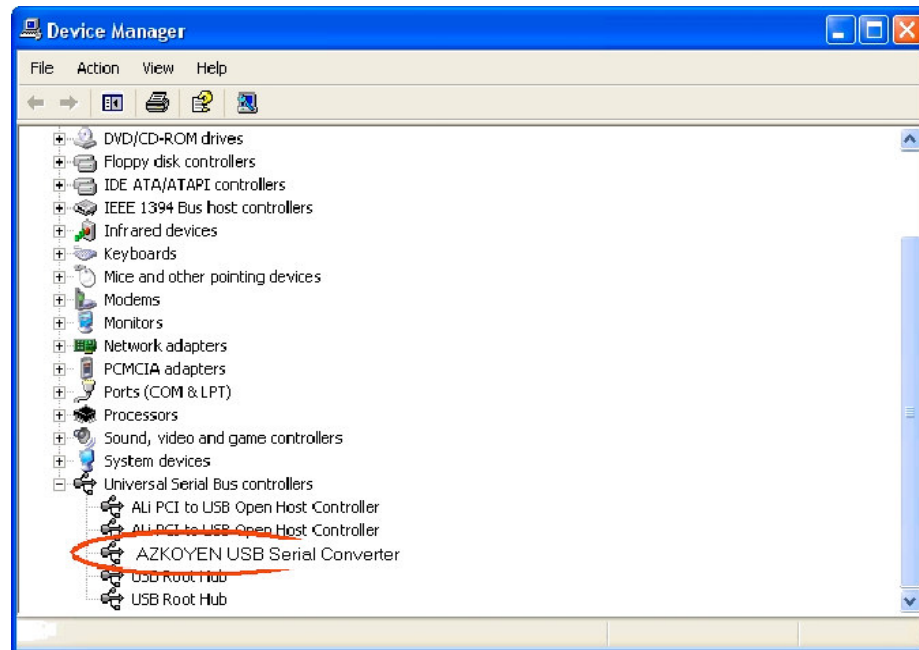
The following screen will be displayed as Windows XP copies the required driver files.



Windows should then display a message indicating that the installation was successful. Click "Finish" to continue the installation.



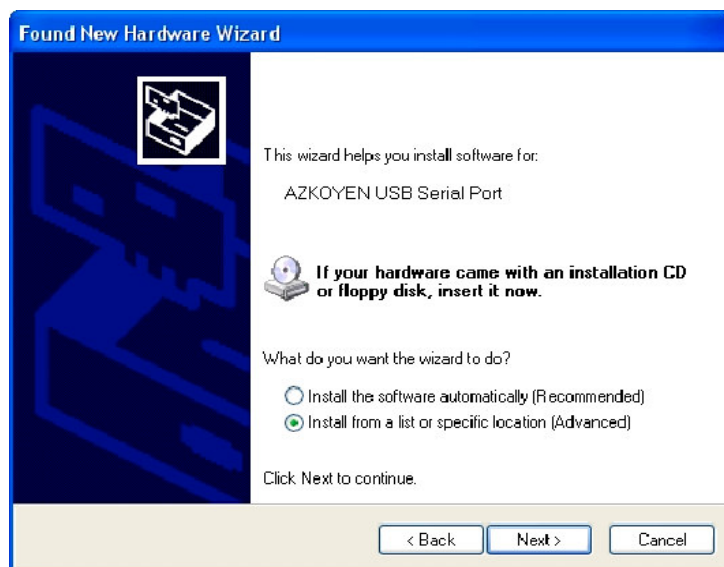
Open the Device Manager (located in "Control Panel\System") then select the "Hardware" tab and click "Device Manager") and select "View > Devices by Type". The device appears as a AZKOYEN USB Serial Converter connected to a USB port.



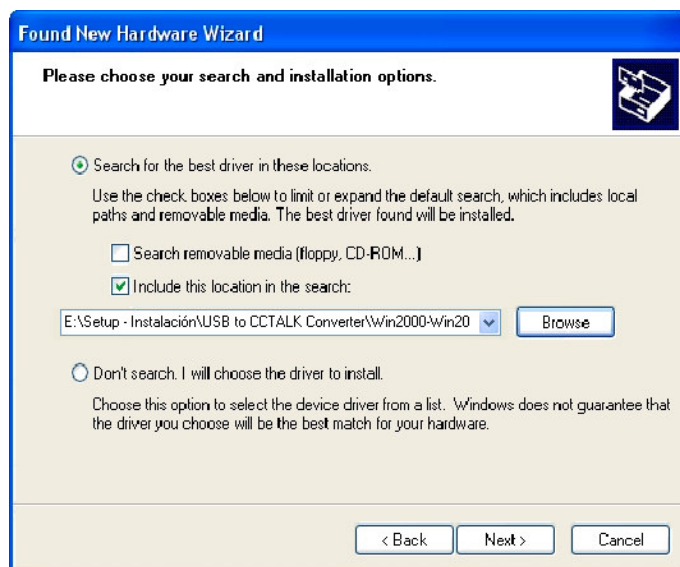
After clicking "Finish", the Found New Hardware Wizard will continue by installing the COM port emulation driver. The procedure is the same as that above for installing the serial converter driver.



Select "Install from a list or specific location (Advanced)" as shown below and then click "Next".



Select "Search for the best driver in these locations" and enter the file path in the combo-box ("D:\ Setup - Instalación\ USB to CCTALK Converter\ Win2000-Win2003-WinXP" in the example below) or browse to it by clicking the browse button. Once the file path has been entered in the box, click next to proceed.



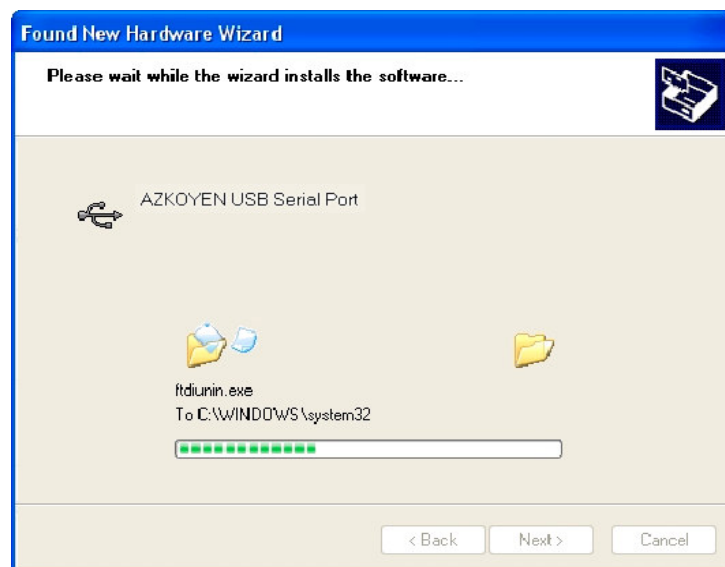
If Windows XP is configured to warn when unsigned (non-WHQL certified) drivers are about to be installed, the following screen will be displayed. Click on "Continue Anyway" to continue with the installation. If Windows XP is configured to ignore file signature warnings, no message will



appear.



The following screen will be displayed as Windows XP copies the required driver files.



Windows should then display a message indicating that the installation was successful. Click "Finish" to complete the installation. This has installed the serial converter. The COM port emulation driver must be installed after this has completed.

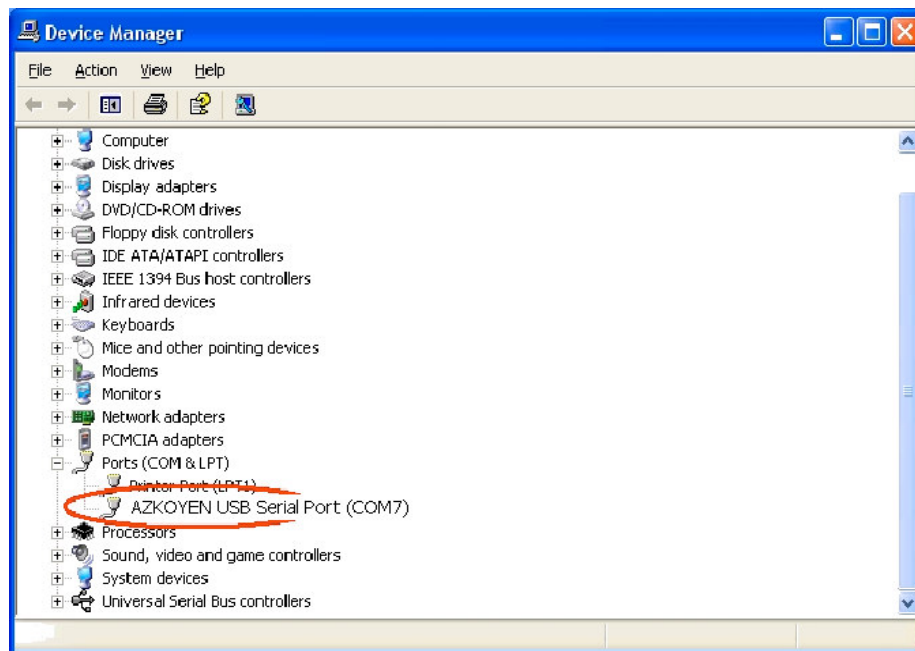




2.1 Configuration hardware of Communication Port

You have to know the port number when.

Open the Device Manager (located in "Control Panel\System") then select the "Hardware" tab and click "Device Manager") and select "View > Devices by Type". The device appears as an additional COM port with the label "AZKOYEN USB Serial Port"





AZKOYEN Medios de Pago, S.A.
Avda. San Silvestre, s/n
31350 Peralta (Navarra) - Spain
Phone: +34 948 709709
Web: www.azkoyen.com