

Modular C6

5" validator for high security applications



DSM technology

BENEFITS AND ADVANTAGES

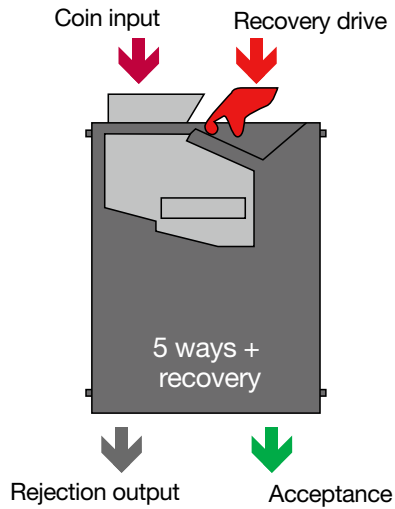
- Electronic thread detection system
- Mechanical thread detection system
- High-speed coin sorting
- All the coin channels are compatible with all € coins
- DSM technology
- Versions available for each country
- Easy to maintain

Modular validators C6

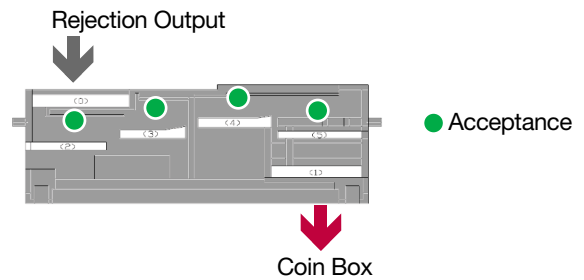
5"

Coin Management

C6



Lower View



Mechanical Characteristics

Coin Acceptance	32
Token Acceptance	2
Coin inhibition	√
Coin diameters	16.25 mm - 32.5 mm
Coin thickness	1.2 mm - 3.3 mm
Dimensions	127 x 61,5 x 180 mm
Degrees of inclination	3° on all axes

Electrical Characteristics C6

Voltage	Nominal	12-24 V
	Minimum	10,8 Vdc
	Maximum	26,4 Vdc
Current	Standard	100 mA
	Maximum	150 mA

Working Conditions

Working Temperature	+5°C to +55°C
Relative Humidity (without condensation)	95 %
Storage Temperature	-25°C to +70°C

Accessories

- Integrated funnel
- Reprogramming tools

Protocols

ccTalk

Modular C6 Validator



Funnel

Integrated funnel



Measurements

C6 Validator

