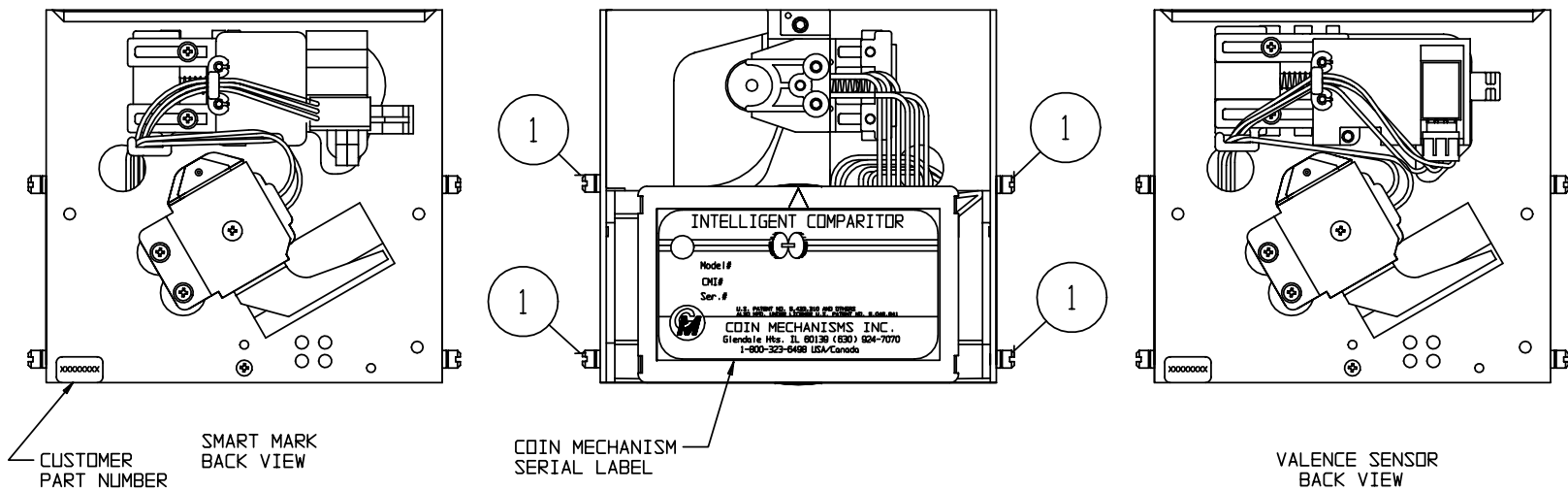


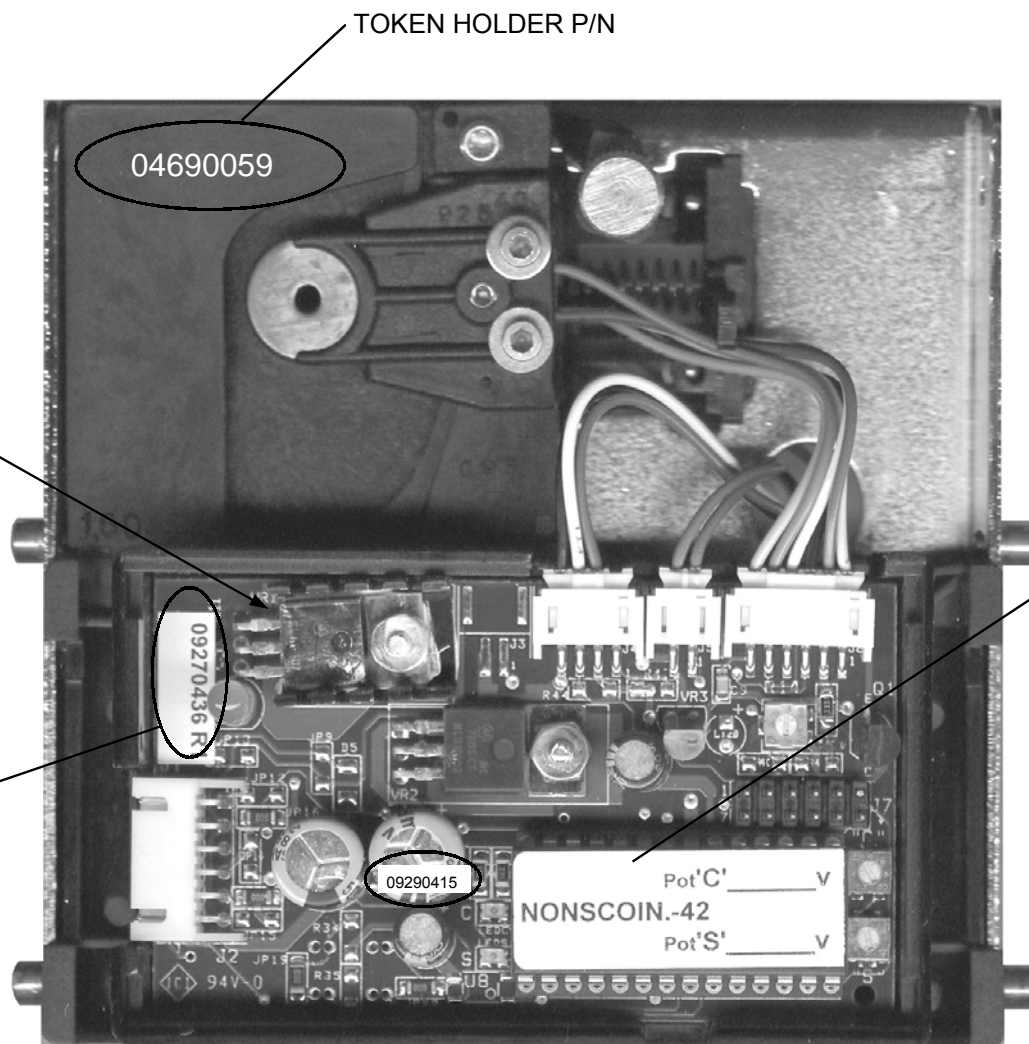
MATERIAL COLUMN			
ITEM	P/N	QTY	MATL' DESCRIPTION
1	04060005-01	4	STUD, #6
2	0406XXXX	1	WEIGHT, DAMPER, (SEE DOC #09300019)
3	04660165	1	COVER, PCB HSG, UNIVERSAL
4	04690243	A/R	SPACER, IC, .010
5	04690244	A/R	SPACER, IC, .020
6	04690276	1	CLIP, WIRE, BARCODE, IC
7	0469XXXX	1	HOLDER, TKN, IC, (SEE PAGE 2)
8	0469XXXX	1	HOLDER, BC RDR, (SEE PAGE 2)
9	04690104	1	HOLDER, VALENCE READER
10	0625XXXX	1	COIL, ASSY, SENSOR, IC, (SEE PAGE 2)
10A	0569XXXX	—	LEVER, ASSY, DAMPER, IC, (SEE PAGE 2)
10B	04690266-01	—	PIN, PIVOT, DAMPER, IC
11	06250259	1	COIL& BRKT ASSY, IC, GRN (SEE PAGE 2)
	06250260	1	COIL& BRKT ASSY, IC, GRY (SEE PAGE 2)
12	06270045	1	PCB, ASSY, BC RDR, SM, TESTED
13	06280101	1	HARNESS, VAL, 3 PIN AMP, 4 PIN PHR, RED/BLK/VID, 5.25
14	0665XXXX	1	RETAINER, ASSY, IC, SPRING (SEE PAGE 2)
15	06660018	1	CHASSIS, IC-16WB
16	08290208	1	PHOTOINTERRUPTER, REFLECTIVE
17	0927XXXX	1	PCB, CTRL, IC, (SEE PAGE 2)
18	0950-000XXXX	1	IC, 87C752, (SEE PAGE 2)
19	436-4	2	NUT, 4-40, HEX, KEPS
20	P-166-6-X	1	SCREW, 6-32, (SEE DOCUMENT #09300013)
21	P-186-4-3	2	SCREW, 4-40 X 3/16, PHIL/SQ. INT SEMS WASHER
22	P-217-2-5	1	SCREW, 2 X 5/16, PHIL, PH, HI-LO

NOTES:

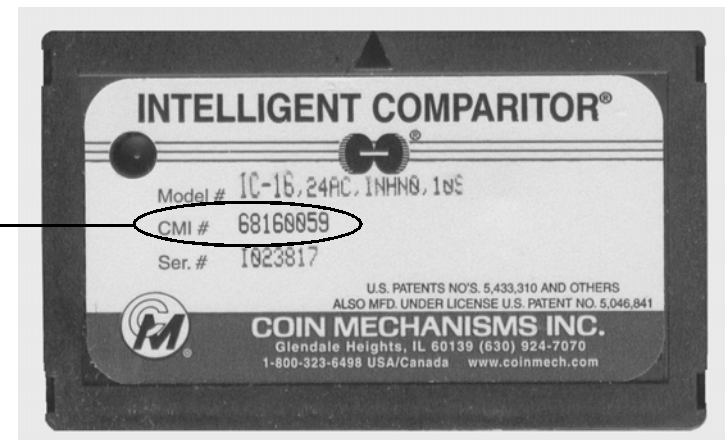
- SEE INDIVIDUAL BILLS OF MATERIALS FOR VARIABLE SINGLE COMPONENTS INDICATED BY SQUARE BALLONS.
- SEE INDIVIDUAL BILLS OF MATERIALS FOR HARNESS REQUIREMENTS.



RELEASED; SEE INDIVIDUAL P/N'S FOR REVISION LEVELS		9/12/02	
NO.	ECO NO.	DATE/	BY
REVISIONS			
COIN MECHANISMS INC. 400 REGENCY DR. GLENDALE HEIGHTS, IL 60139		TITLE IC-16, WIDE BODY P/N IDENTIFICATION	
TOLERANCES NOT SPECIFIED FRACTIONS= ± 1/64 ANGLES= ±1° .XX= ±.010 .XXX= ±.005 HOLE DIA.= ±.002		DRAWN DF	DATE 4/30/02
CRITICAL SYMBOLS ▼ = CUSTOMER ▽ = PROCESS ▾ = BOTH		CHKD DATE	APP DATE
This drawing is the property of and contains proprietary information of Coin Mechanisms Inc. The drawing shall be returned upon request and is not to be copied or disclosed without written authorization and will not be used in any way detrimental to the interest of Coin Mechanisms.		DWG NO. 00681605	
SIZE: D		SCALE: N/A	FINISH: N/A
			SHT 1 OF 2



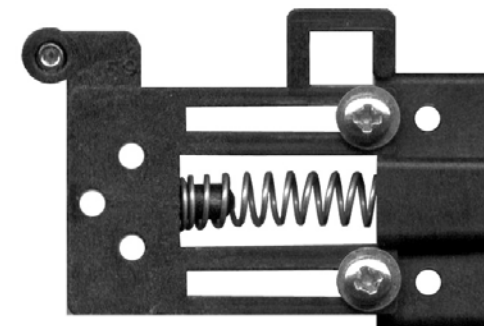
IC WITH COVER REMOVED



IC COVER

INTELLIGENT COMPARITOR P/N

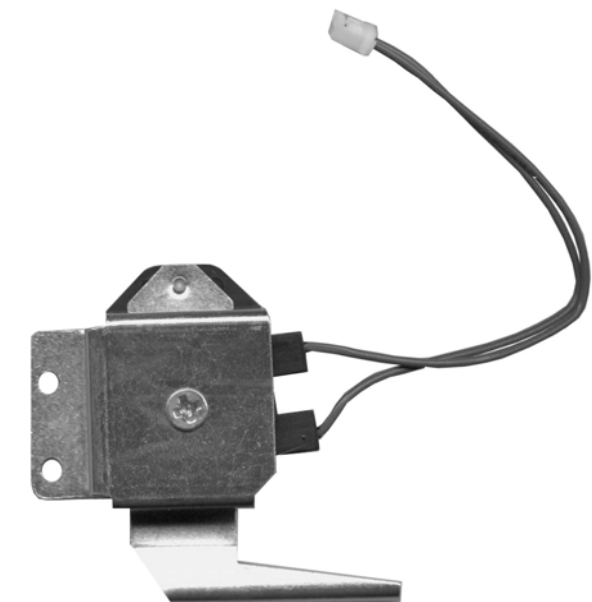
MICRO P/N
(MAY HAVE 0950-000XXX FORMAT)



SPRING RETAINER ASSEMBLY

P/N 06650258= FOR COIN DIAMETERS BELOW 1.812" [46.0mm]

P/N 06650269= FOR COIN DIAMETERS 1.812" [46.0mm] AND ABOVE



ACCEPT COIL ASSEMBLY

P/N 06250259= GREEN WIRES FOR LOW VOLTAGE (12-13VDC)

P/N 06250260= GRAY WIRES FOR HIGH VOLTAGE (24VAC)



13 VOLT WILL HAVE IDENTIFYING LABEL INSTEAD OF REGULATOR

PCB P/N

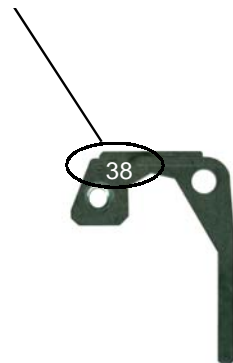
04690059

09270436 R

09290415

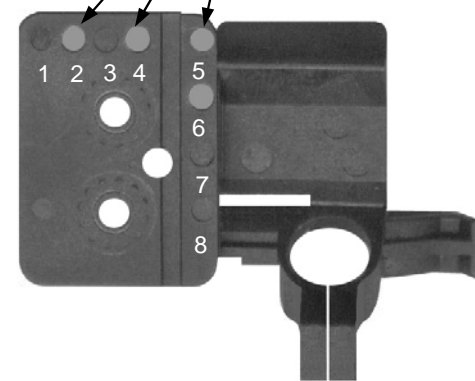
Pot 'C' _____ V
NONSCOIN.-42
Pot 'S' _____ V

P/N 05690XXX
LAST SIGNIFICANT DIGITS MOLDED ON DAMPER LEVER



DAMPER LEVER

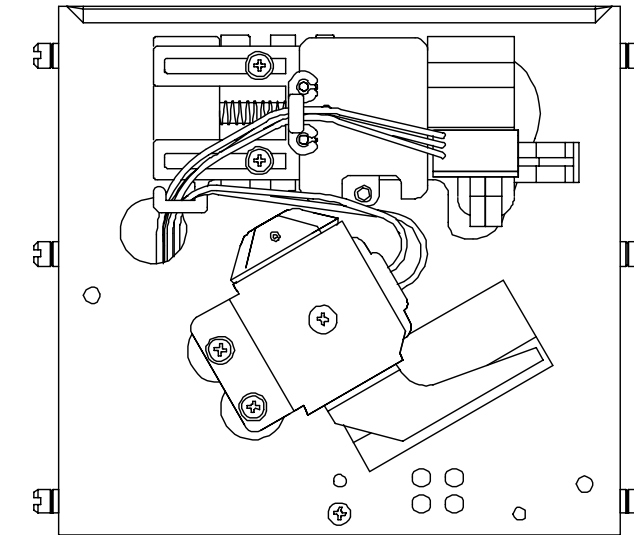
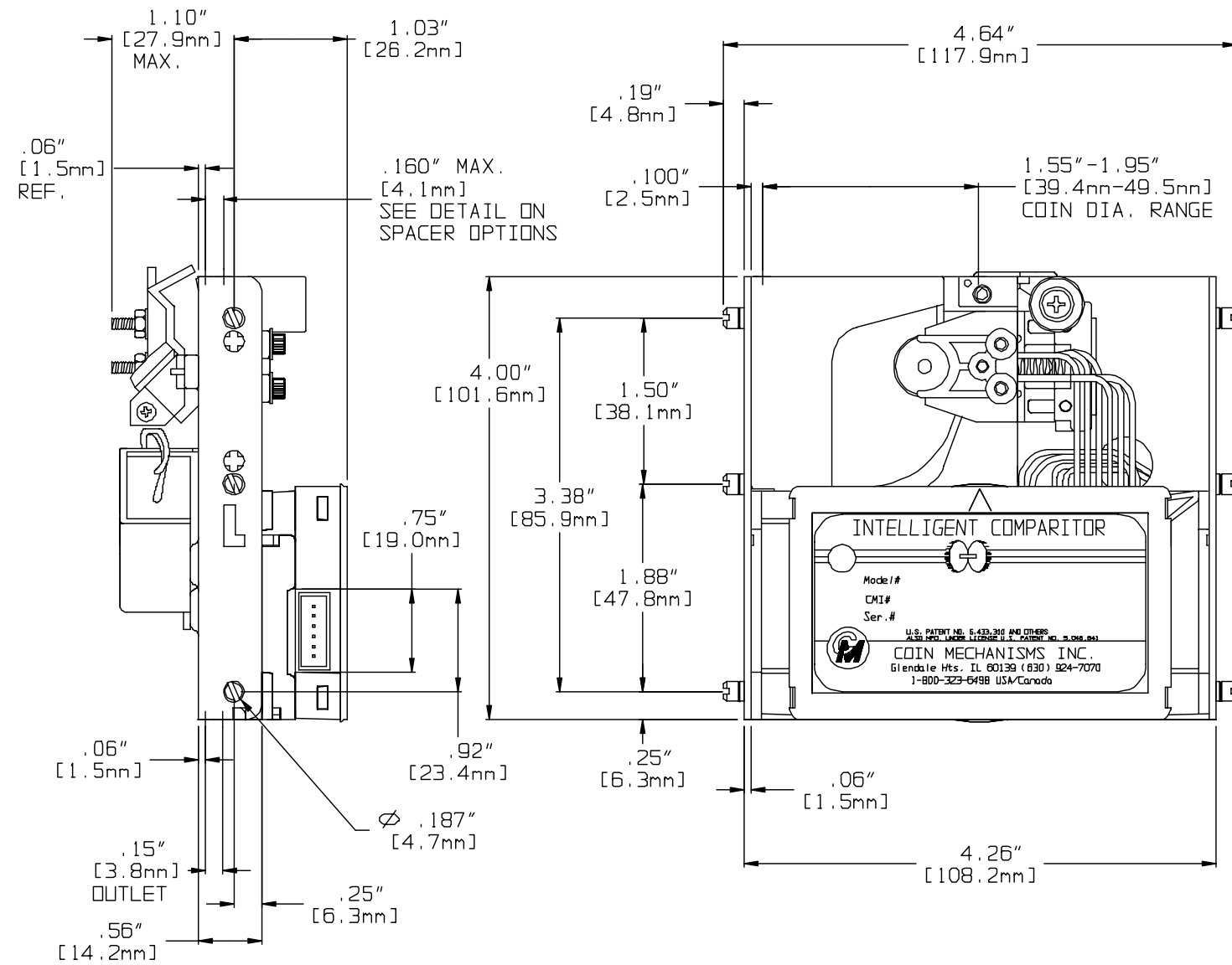
COLOR, PLACEMENT AND NUMBER OF DOTS IDENTIFIES BARCODE HOLDER P/N



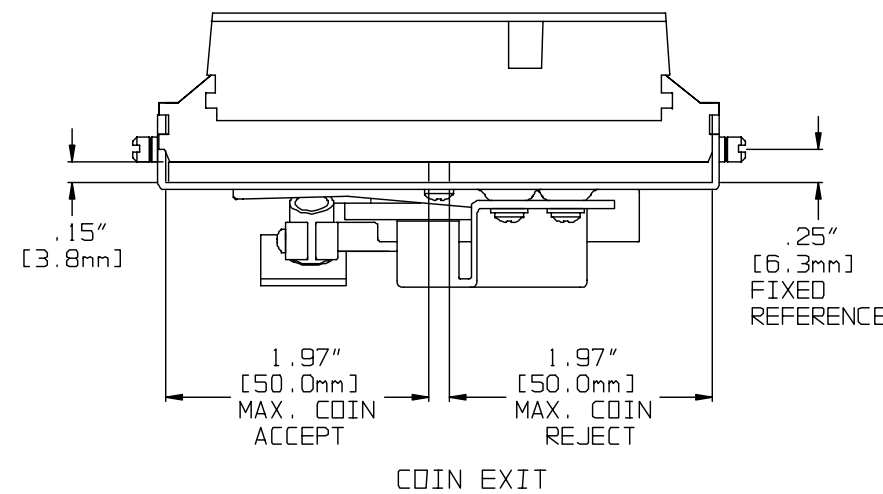
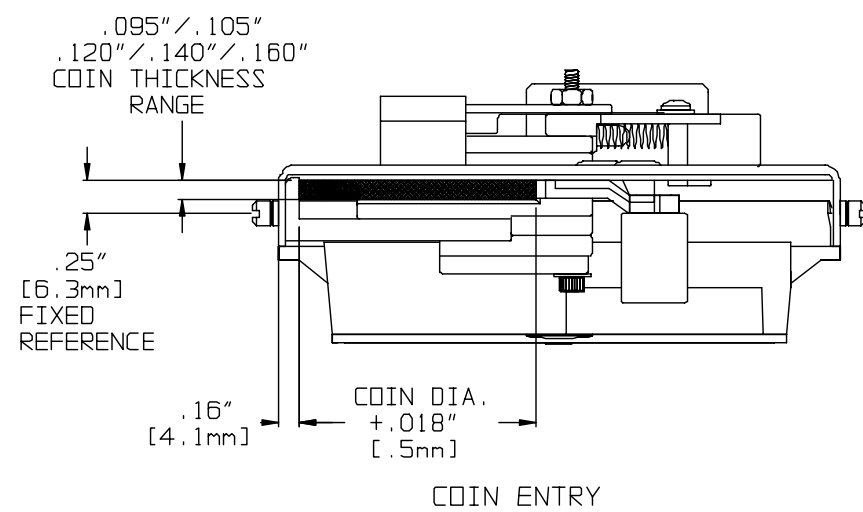
BARCODE HOLDER

X X		RELEASED; SEE INDIVIDUAL P/N'S FOR REVISION LEVELS		9/12/02 DF	
NO.	ECD NO.	REVISIONS			DATE/BY
 COIN MECHANISMS INC. 400 REGENCY DR. GLENDALE HEIGHTS, IL 60139		TOLERANCES NOT SPECIFIED FRACTIONS = ± 1/64 ANGLES = ± 1° .XX = ± 0.010 .XXX = ± 0.005 HOLE DIA. = ± 0.002		TITLE IC-16 WIDE BODY P/N IDENTIFICATION	
This drawing is the property of and contains proprietary information of Coin Mechanisms Inc. The drawing shall be returned upon request and is not to be copied or disclosed without written authorization and will not be used in any way detrimental to the interest of Coin Mechanisms.		CRITICAL SYMBOL 		DRAWN DF	DATE 6/7/02
SIZE: B N/A		FINISH: N/A		SHT 2 OF 2	

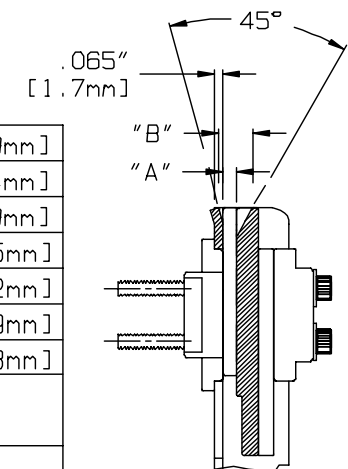
IC-16WB SMART MARK DIMENSIONS DWG# ENG00100



BACK VIEW
ROUTING FOR ACCEPT COIL LEADS



.160" [4.1mm]	.310" [7.9mm]
.140" [3.6mm]	.290" [7.4mm]
.120" [3.0mm]	.270" [6.9mm]
.105" [2.7mm]	.255" [6.5mm]
.095" [2.4mm]	.245" [6.2mm]
.082" [2.1mm]	.232" [5.9mm]
.072" [1.8mm]	.222" [5.3mm]
"A" SPACER	"B" ENTRY
SPACER OPTIONS	



COIN MECHANISMS INC.

P.O. Box 5128, Glendale Heights, IL 60139-5128
630/924-7070*1-800/323-6498*FAX 630/924-7088*E-MAIL-coinmech@coinmech.com
VISIT OUR WEB SITE AT www.coinmech.com

P/N ENG00100 -5/02