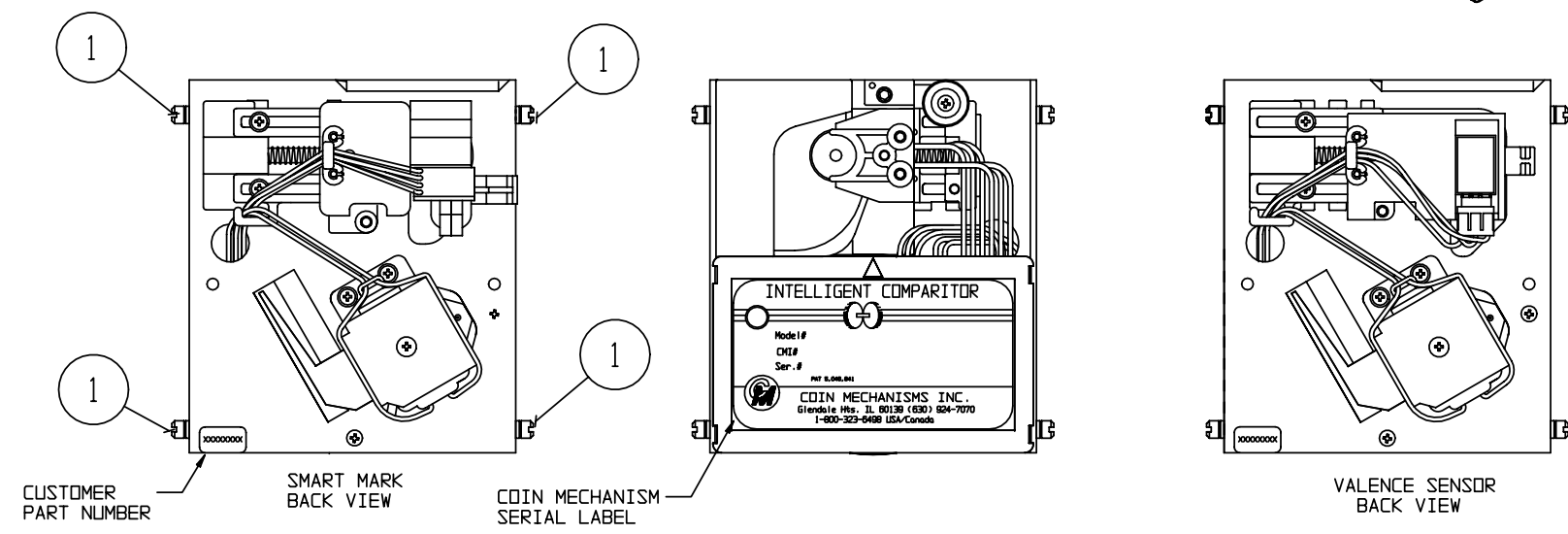
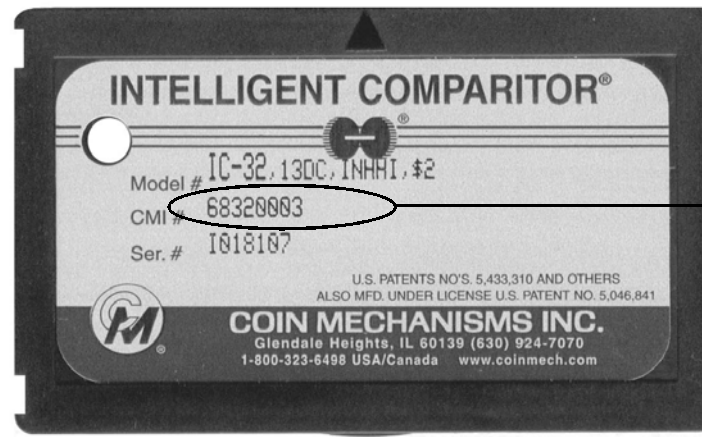


MATERIAL COLUMN			
ITEM	P/N	QTY	MATL' DESCRIPTION
1	04060005-01	4	STUD, #6
2	0406XXXX	1	WEIGHT, DAMPER, (SEE DOCUMENT #09300019)
3	04660165	1	COVER, PCB HSG, UNIVERSAL
4	04690276	1	CLIP, WIRE, BARCODE, IC
5	04690243	A/R	SPACER, IC, .010
6	04690244	A/R	SPACER, IC, .020
7	0469XXXX	1	HOLDER, TKN, IC, (SEE PAGE 2)
8	0469XXXX	1	HOLDER, BC RDR, (SEE PAGE 2)
9	04690104	1	HOLDER, VALENCE READER
10	06250193	1	COIL & BRKT, ASSY, GRN, 4", PHR (SEE PAGE 2)
	06250199	1	COIL & BRKT, ASSY, GRY, 4", PHR (SEE PAGE 2)
11	0625XXXX	1	COIL, ASSY, SENSOR,
11A	0569XXXX	—	LEVER, ASSY, DAMPER, IC (SEE PAGE 2)
11B	04690266-01	—	PIN, PIVOT, DAMPER, IC
12	06270045	1	PCB, ASSY, BC RDR, SM, TESTED
13	06280101	1	HARNESS, VAL, 3 PIN AMP, 4 PIN PHR, RED/BLK/VID, 5.25
14	0665XXXX	1	RETAINER, ASSY, IC,
15	0927XXXX	1	PCB, CTRL, IC, (SEE PAGE 2)
16	06680024	1	CHASSIS, IC-32/33, SALES
17	08290208	1	PHOTOINTERRUPTER, REFLECTIVE
18	0950-000XXXX	1	IC, 87C752, (SEE PAGE 2)
19	436-4	2	NUT, 4-40, HEX, KEPS
20	P-166-6-X	1	SCREW, 6-32 (SEE DOCUMENT #09300019)
21	P-186-4-3	2	SCREW, 4-40 X 3/16, PHIL/SQ, INT SEMS WASHER
22	P-217-2-5	1	SCREW, 2 X 5/16, PHIL, PH, HI-LO

- NOTES:
- SEE INDIVIDUAL BILLS OF MATERIALS FOR VARIABLE SINGLE COMPONENTS INDICATED BY SQUARE BALLONS.
 - SEE INDIVIDUAL BILLS OF MATERIALS FOR HARNESS REQUIREMENTS.

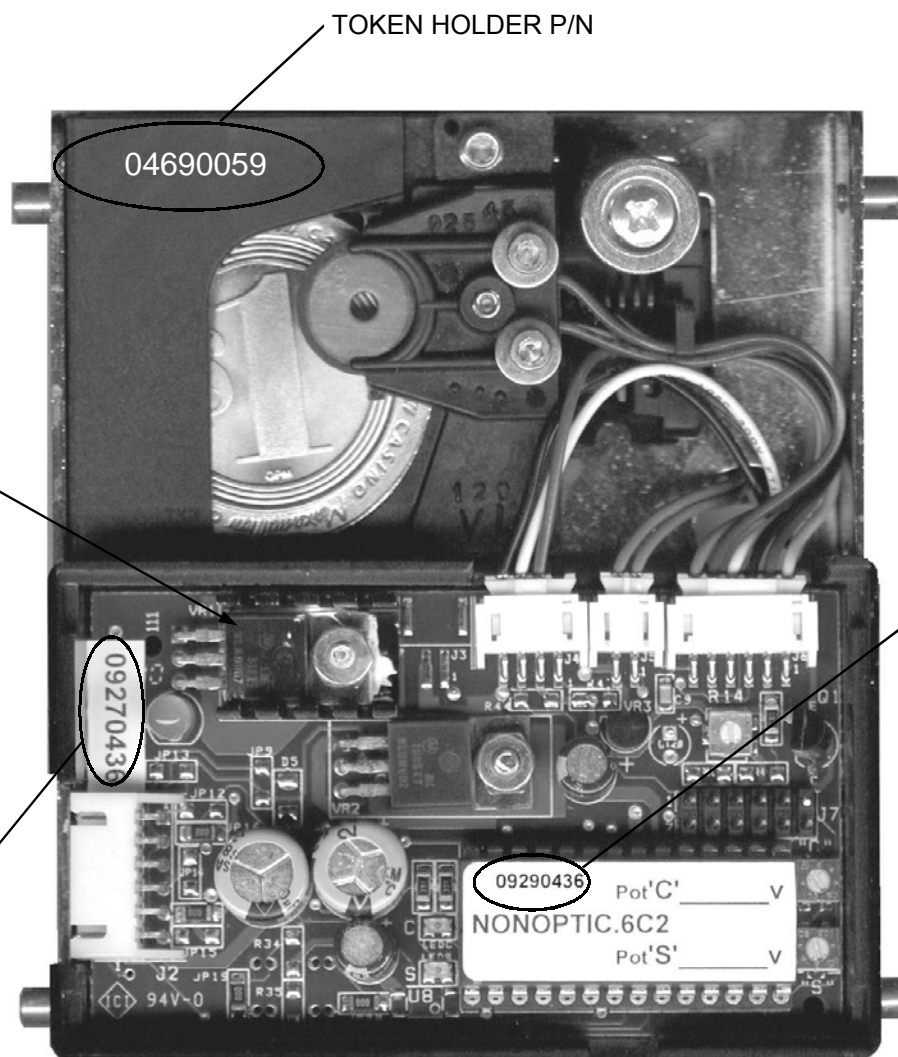


RELEASED; SEE INDIVIDUAL P/N'S FOR REVISION LEVELS		9/12/02	
ECO NO.		DATE/DF	
REVISIONS			
NO.		DATE/DF	
 COIN MECHANISMS INC. 400 REGENCY DR. GLENDALE HEIGHTS, IL 60139		TITLE IC-32/33, P/N IDENTIFICATION	
TOLERANCES NOT SPECIFIED FRACTIONS= ± 1/64 ANGLES= ± 1° .XX= ± .010 .XXX= ± .005 HOLE DIA.= ± .002		DRAWN DF DATE 4/30/02 CHKD DATE APP DATE DWG NO. 00683202	
This drawing is the property of and contains proprietary information of Coin Mechanisms Inc. The drawing shall be returned upon request and is not to be copied or disclosed without written authorization and will not be used in any way detrimental to the interest of Coin Mechanisms.		CRITICAL SYMBOLS ▼ = CUSTOMER ▼ = PROCESS ▼ = BOTH	
SIZE: D SCALE: N/A		FINISH: N/A	
		SHT 1 OF 2	



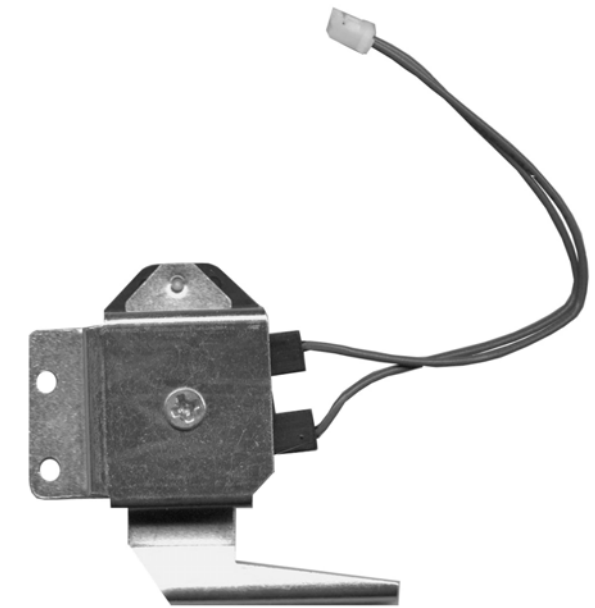
IC COVER

INTELLIGENT COMPARITOR P/N



IC WITH COVER REMOVED

13 VOLT WILL HAVE IDENTIFYING LABEL INSTEAD OF REGULATOR

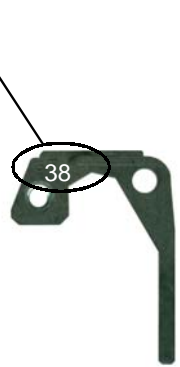


ACCEPT COIL ASSEMBLY

P/N 06250193= GREEN WIRES FOR LOW VOLTAGE (12-13VDC)

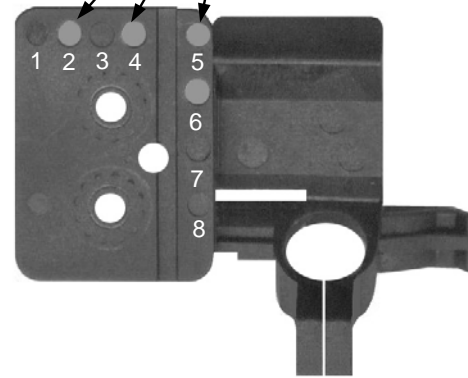
P/N 06250199= GRAY WIRES FOR HIGH VOLTAGE (24VAC)

P/N 05690XXX LAST SIGNIFICANT DIGITS MOLDED ON DAMPER LEVER



DAMPER LEVER

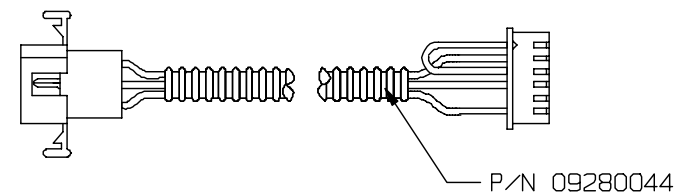
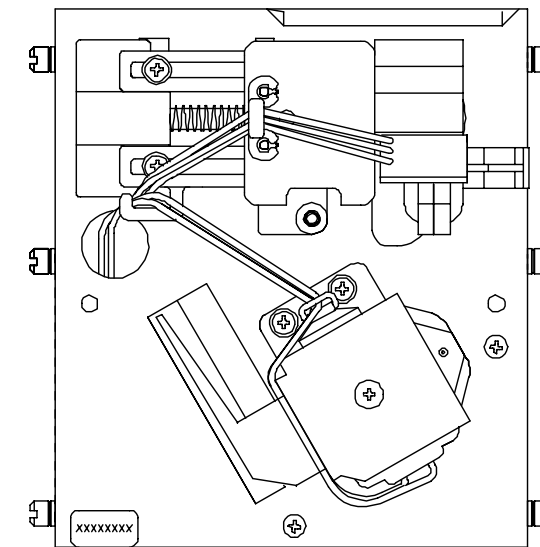
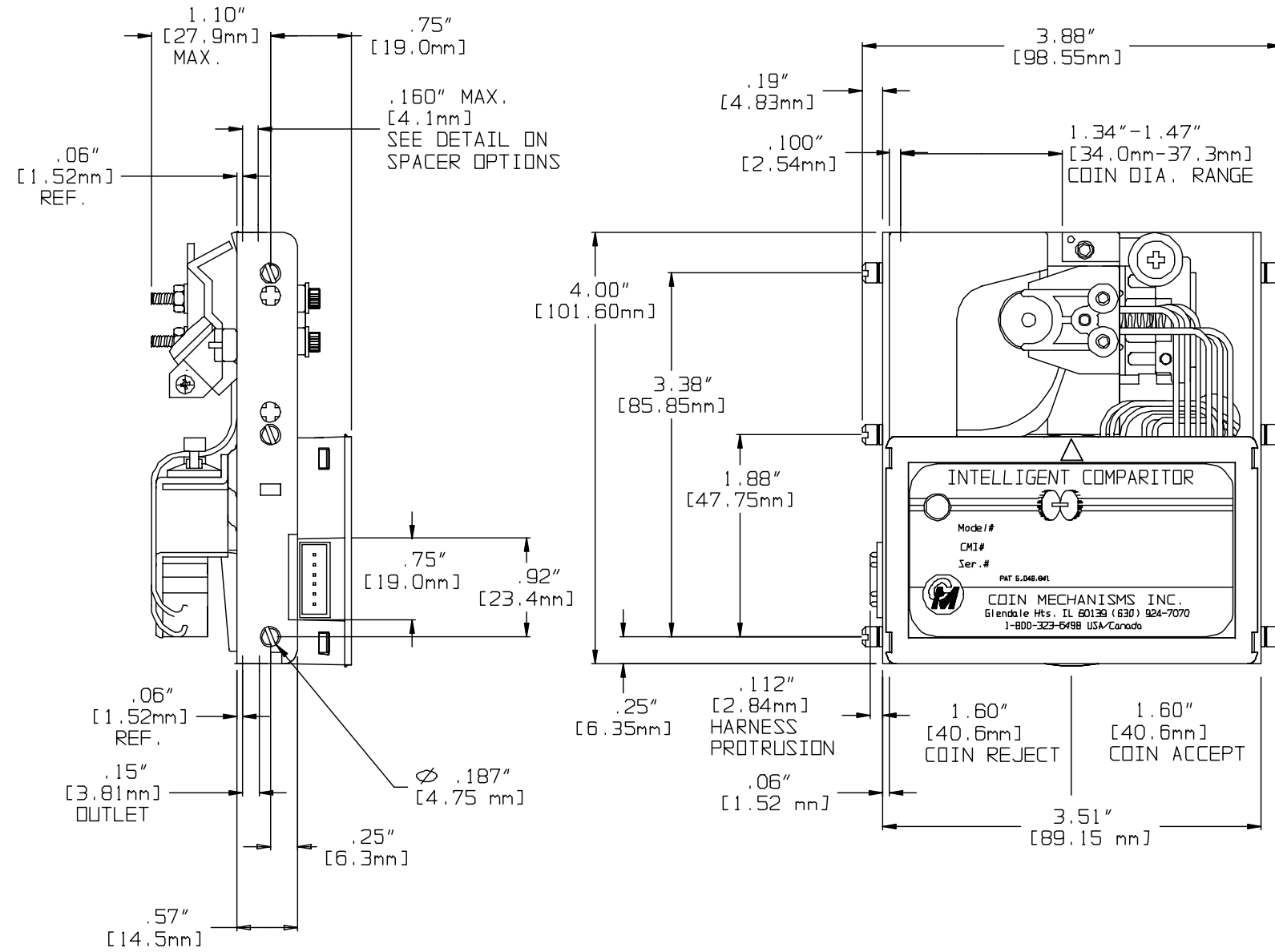
COLOR, PLACEMENT AND NUMBER OF DOTS IDENTIFIES BARCODE HOLDER P/N



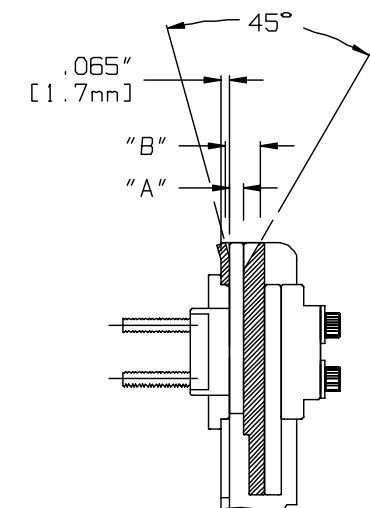
BARCODE HOLDER

		RELEASED; SEE INDIVIDUAL P/N'S FOR REVISION LEVELS			9/12/02 DF
NO.	ECO NO.	REVISIONS			DATE/BY
COIN MECHANISMS INC. 400 REGENCY DR. GLENDALE HEIGHTS, IL 60139		TOLERANCES NOT SPECIFIED FRACTIONS= ± 1/64 ANGLES= ±1° .XX= ±.010 .XXX= ±.005 HOLE DIA.= ±.002		TITLE IC-32/33 P/N IDENTIFICATION	
		DRAWN	DF	DATE	9/5/02
		CHKD		DATE	
		APP		DATE	
		DWG NO. D0683202			
This drawing is the property of and contains proprietary information of Coin Mechanisms Inc. The drawing shall be returned upon request and is not to be copied or disclosed without written authorization and will not be used in any way detrimental to the interest of Coin Mechanisms.		CRITICAL SYMBOL 		FINISH:	N/A
SIZE: B		N/A		SHT 2 OF 2	

IC-33 SMART MARK DIMENSIONS



.160" [4.1mm]	.310" [7.9mm]
.140" [3.6mm]	.290" [7.4mm]
.120" [3.0mm]	.270" [6.9mm]
.105" [2.7mm]	.255" [6.5mm]
.095" [2.4mm]	.245" [6.2mm]
.082" [2.1mm]	.232" [5.9mm]
.072" [1.8mm]	.222" [5.3mm]
"A" SPACER	"B" ENTRY
SPACER OPTIONS	



COIN MECHANISMS INC.

P.O. Box 5128, Glendale Heights, IL 60139-5128 P/N ENG00093 -7/01
 630/924-7070*1-800/323-6498*FAX 630/924-7088*E-MAIL-coinmech@coinmech.com
 VISIT OUR WEB SITE AT www.coinmech.com