

MATERIAL COLUMN				
ITEM	P/N	QTY	MATL' DESCRIPTION	
1	04060005-01	4	STUD, #6	
2	0406XXXX	1	WEIGHT, DAMPER, (SEE DOCUMENT #09300019)	
3	04660165	1	COVER, PCB HSG, UNIVERSAL	
4	04690243	A/R	SPACER, IC, .010	
5	04690244	A/R	SPACER, IC, .020	
6	04690276	1	CLIP, WIRE, BARCODE, IC	
7	0469XXXX	1	HOLDER, TKN, IC, (SEE PAGE 2)	
8	0469XXXX	1	HOLDER, BC, 45°, (SEE PAGE 2)	
9	04690104	1	HOLDER, VALENCE READER	
10	0625XXXX	1	COIL, ASSY, SENSOR,	
10A	0569XXXX	—	LEVER, ASSY, DAMPER, IC	
10B	04690266-01	—	PIN, PIVOT, DAMPER, IC	
11	06250193	1	COIL & BRKT, ASSY, GRN, 4", PHR (SEE PAGE 2)	
	06250199	1	COIL & BRKT, ASSY, GRY, 4" PHR (SEE PAGE 2)	
12	06270045	1	PCB, ASSY, BC RDR, SM, TESTED	
13	06280101	1	HARNESS, VAL, 3 PIN AMP, 4 PIN PHR, RED/BLK/VID, 5.25	
14	06650258	1	RETAINER, ASSY, IC, SPRING	
15	06680023	1	CHASSIS, IC-36/37, SALES	
16	08290208	1	PHOTOINTERRUPTER, REFLECTIVE	
17	0927XXXX	1	PCB, CTRL, IC (SEE PAGE 2)	
18	0950-00XXXX	1	IC, 87C752 (SEE PAGE 2)	
19	436-4	2	NUT, 4-40, HEX, KEPS	
20	P-166-6-X	1	SCREW, 6-32 (SEE DOCUMENT #09300019)	
21	P-186-4-3	2	SCREW, 4-40 X 3/16, PHIL/SQ. INT SEMS WASHER	
22	P-217-2-5	1	SCREW, 2 X 5/16, PHIL, PH, HI-LO	

- NOTES:
- SEE INDIVIDUAL BILLS OF MATERIALS FOR VARIABLE SINGLE COMPONENTS INDICATED BY SQUARE BALLONS.
  - SEE INDIVIDUAL BILLS OF MATERIALS FOR HARNESS REQUIREMENTS.

RELEASED; SEE INDIVIDUAL P/N'S FOR REVISION LEVELS		9/12/02 DF	
NO.	ECO NO.	REVISIONS	
DATE/NO.		DATE/NO.	
<b>COIN MECHANISMS INC.</b> 400 REGENCY DR. GLENDALE HEIGHTS, IL 60139		TOLERANCES NOT SPECIFIED FRACTIONS= ± 1/64 ANGLES= ± 1° .XX= ± .010 .XXX= ± .005 HOLE DIA.= ± .002	
This drawing is the property of and contains proprietary information of Coin Mechanisms Inc. The drawing shall be returned upon request and is not to be copied or disclosed without written authorization and will not be used in any way detrimental to the interest of Coin Mechanisms.		TITLE <b>IC-36/37, P/N IDENTIFICATION</b>	
CRITICAL SYMBOLS ▼ = CUSTOMER ▽ = PROCESS ▾ = BOTH	DRAWN DW DATE 4/30/02	APP DATE	DWG NO. <b>00683603</b>
SIZE: D	SCALE: N/A	FINISH: N/A	SHT 1 OF 2



IC-37 WITH COVER REMOVED



13 VOLT WILL HAVE IDENTIFYING LABEL INSTEAD OF REGULATOR

PCB P/N

TOKEN HOLDER P/N

MICRO P/N  
(MAY HAVE 0950-000XXX FORMAT)



IC COVER

INTELLIGENT COMPARITOR P/N



ACCEPT COIL ASSEMBLY

P/N 06250193= GREEN WIRES FOR LOW VOLTAGE (12-13VDC)

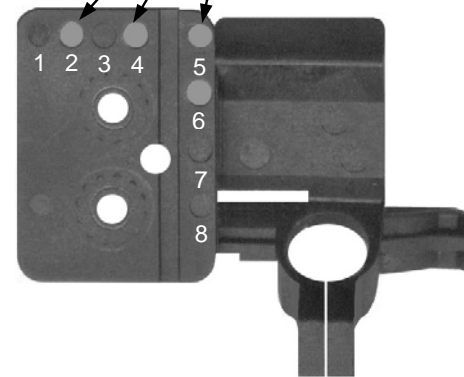
P/N 06250199= GRAY WIRES FOR HIGH VOLTAGE (24VAC)

P/N 05690XXX  
LAST SIGNIFICANT  
DIGITS MOLDED  
ON DAMPER LEVER



DAMPER LEVER

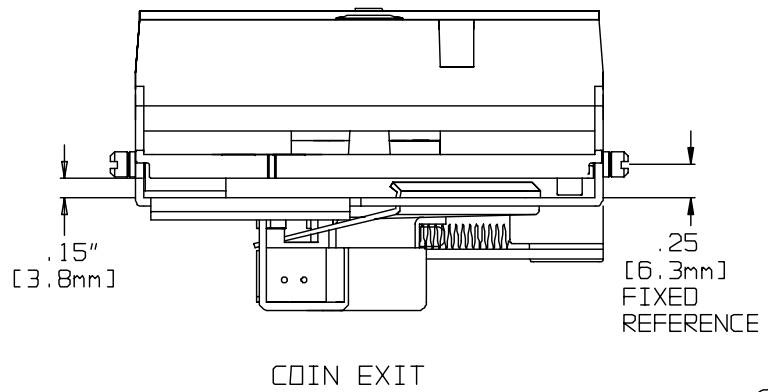
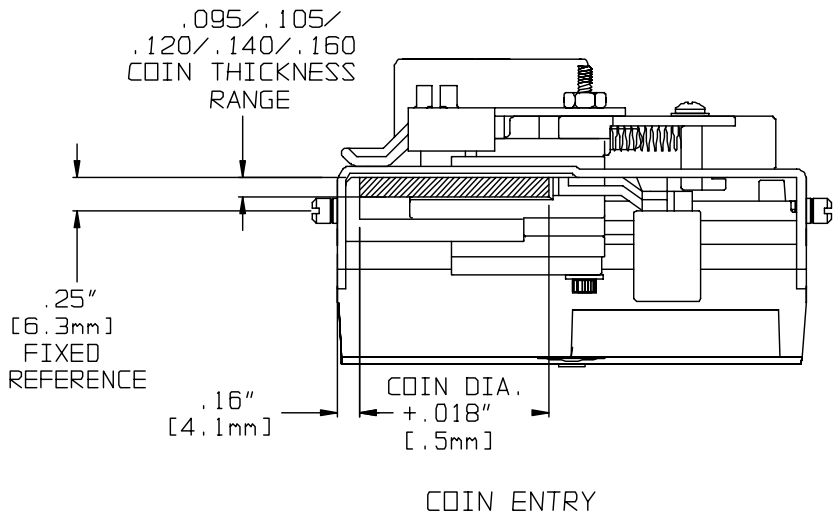
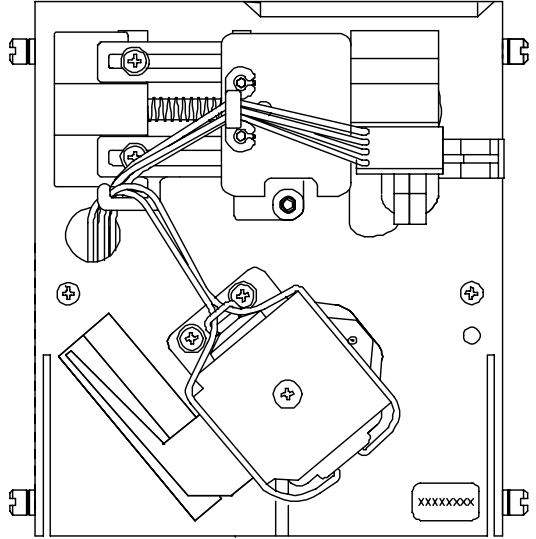
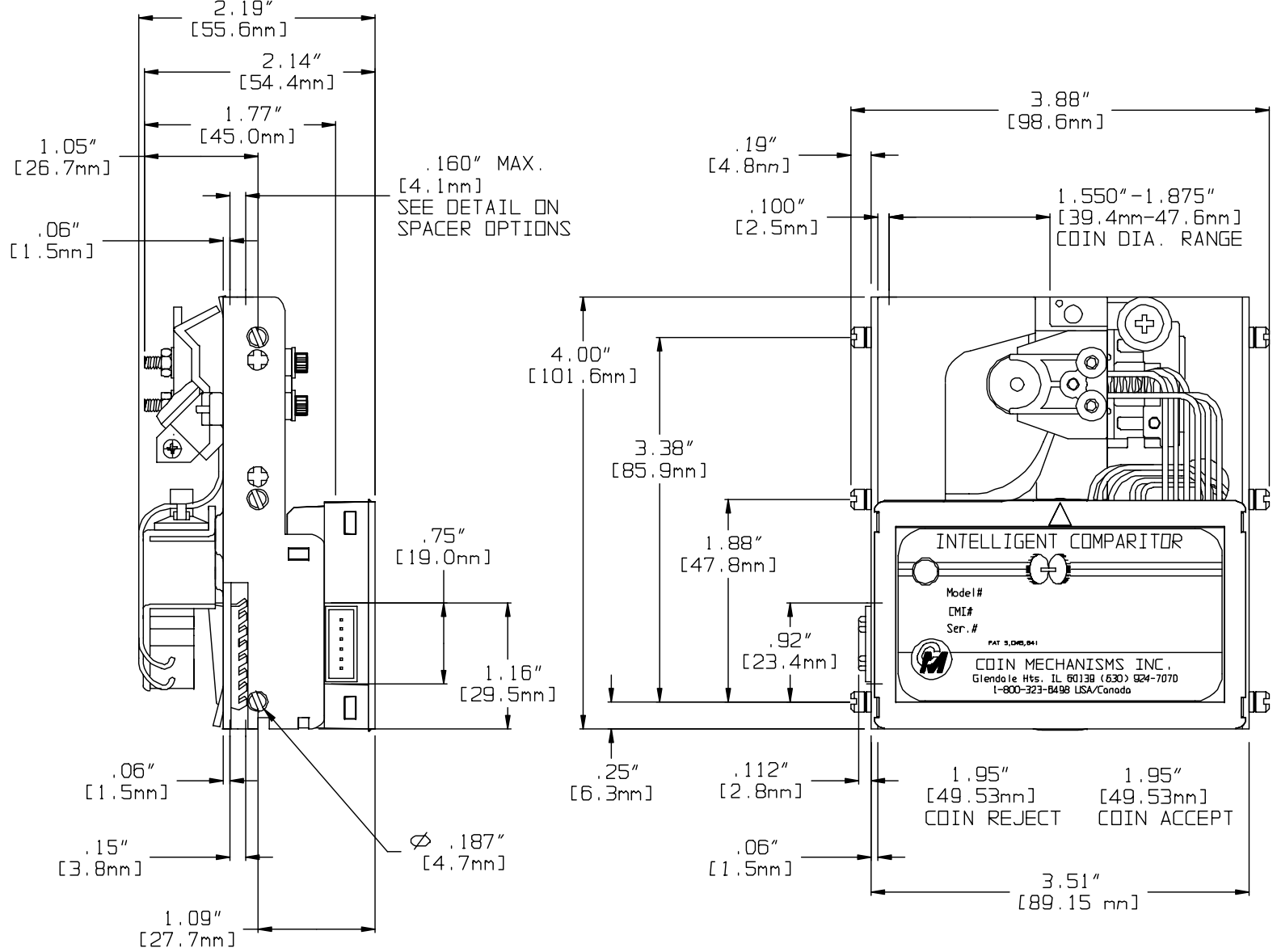
COLOR, PLACEMENT AND  
NUMBER OF DOTS  
IDENTIFIES BARCODE  
HOLDER P/N



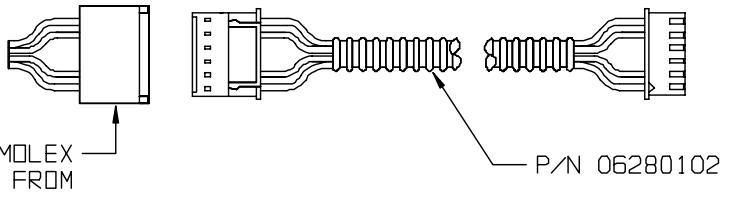
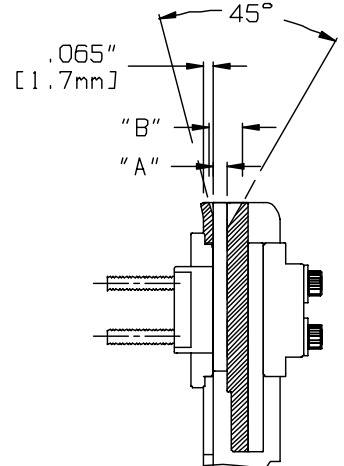
BARCODE HOLDER

RELEASED; SEE INDIVIDUAL P/N'S FOR REVISION LEVELS		9/12/02 DF	
NO.	ECO NO.	REVISIONS	
COIN MECHANISMS INC. 400 REGENCY DR. GLENDALE HEIGHTS, IL 60139		TOLERANCES NOT SPECIFIED FRACTIONS= ± 1/64 ANGLES= ±1° .XX= ±.010 .XXX= ±.005 HOLE DIA.= ±.002	
This drawing is the property of and contains proprietary information of Coin Mechanisms Inc. The drawing shall be returned upon request and is not to be copied or disclosed without written authorization and will not be used in any way detrimental to the interest of Coin Mechanisms.		TITLE <b>IC-36/37 P/N IDENTIFICATION</b>	
CRITICAL SYMBOL 		DRAWN DF DATE 9/5/02	CHECKED DATE
SIZE: B N/A		FINISH: N/A	
DWG NO. D0683603		SHT 2 OF 2	

**IC-36  
SMART MARK  
DIMENSIONS  
DWG# ENG00087**



.160" [4.1mm]	.310" [7.9mm]
.140" [3.6mm]	.290" [7.4mm]
.120" [3.0mm]	.270" [6.9mm]
.105" [2.7mm]	.255" [6.5mm]
.095" [2.4mm]	.245" [6.2mm]
.082" [2.1mm]	.232" [5.9mm]
.072" [1.8mm]	.222" [5.3mm]
"A" SPACER	"B" ENTRY
SPACER OPTIONS	



**COIN MECHANISMS INC.**

P.O. Box 5128, Glendale Heights, IL 60139-5128 P/N ENG00087 -5/02  
630/924-7070\*1-800/323-6498\*FAX 630/924-7088\*E-MAIL-coinmech@coinmech.com  
VISIT OUR WEB SITE AT [www.coinmech.com](http://www.coinmech.com)