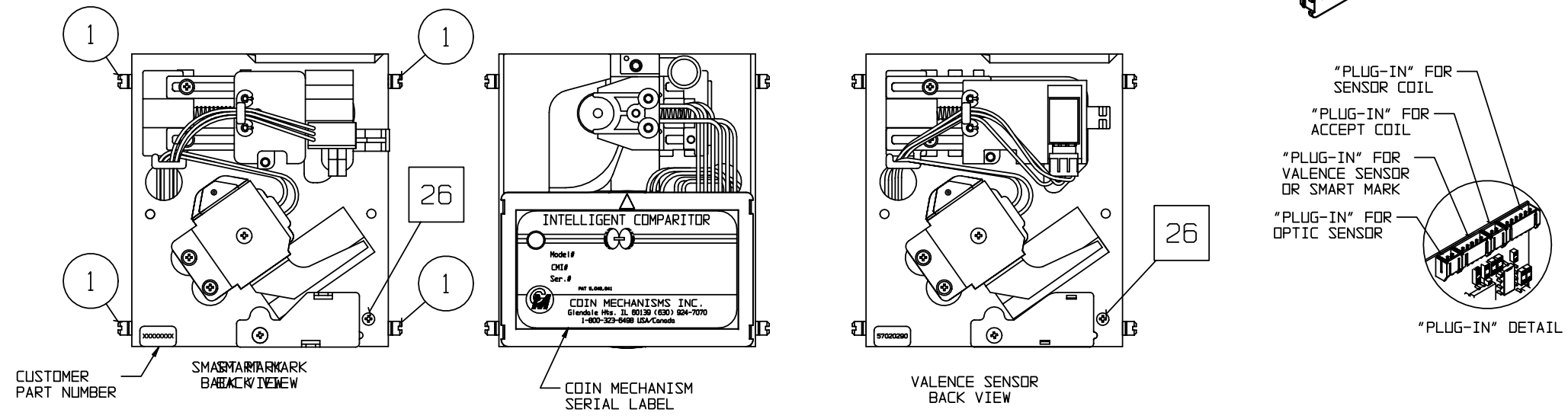


MATERIAL COLUMN			
ITEM	P/N	QTY	MATL' DESCRIPTION
1	04060005-01	4	STUD, #6
2	0406XXXX	1	WEIGHT, DAMPER, (SEE DOCUMENT #09300019)
3	04660034-02	1	PIN, COIL DEFLECTING
4	04660113	1	SPACER, COIN EXIT, .110 (SEE PAGE 2)
	04690406	1	SPACER, COIN EXIT, IC .146, EURO (SEE PAGE 2)
5	04660165	1	COVER, PCB HSG, UNIVERSAL
6	04690243	A/R	SPACER, IC, .010
7	04690244	A/R	SPACER, IC, .020
8	04690276	1	CLIP, WIRE, BARCODE, IC
9	0469XXXX	1	HOLDER, TKN, IC, (SEE PAGE 2)
10	0469XXXX	1	HOLDER, BC RDR, (SEE PAGE 2)
11	04690104	1	HOLDER, VALENCE READER
12	0625XXXX	1	COIL, ASSY, SENSOR, IC
12A	0569XXXX	—	LEVER, ASSY, DAMPER, IC, (SEE PAGE 2)
12B	04690266-01	—	PIN, PIVOT, DAMPER, IC
13	06250134	1	COIL & BRKT, ASSY, GRN, 4", PHR (SEE PAGE 2)
	06250195	1	COIL & BRKT, ASSY, GRY, 4", PHR (SEE PAGE 2)
14	0627XXXX	1	PCB, ASSY, OPTICS, IC, (SEE PAGE 2)
15	06270045	1	PCB, ASSY, BC RDR, SM, TESTED
16	06280101	1	HARNESS, VAL, 3 PIN AMP, 4 PIN PHR, RED/BLK/VID, 5.25
17	06650258	1	RETAINER, ASSY, IC, SPRING
18	06660019	1	CHASSIS, IC-40/62 STD CN (SEE PAGE 2)
	06660021	1	CHASSIS, IC-40/62 SM CN (SEE PAGE 2)
19	08290208	1	PHOTOINTERRUPTER, REFLECTIVE
20	0927XXXX	1	PCB, CTRL, IC, (SEE PAGE 2)
21	0950-000XXXX	1	IC, 87C752, (SEE PAGE 2)
22	436-4	2	NUT, 4-40, HEX, KEPS
23	600-4	1	WASHER, FLAT, #4
24	P-104-4-12	1	SCREW, 4-40 X 3/4, PHIL, MS
25	P-166-6-X	1	SCREW, 6-32 X (SEE DOCUMENT #09300019)
26	P-186-4-3	2	SCREW, 4-40 X 3/16, PHIL/SQ, INT SEMS WASHER
27	P-217-2-5	1	SCREW, 2 X 5/16, PHIL, PH, HI-LO
28	P-221-4-3	1	SCREW, 4 X 3/16, PHIL, TYPE 45, PLASTITE

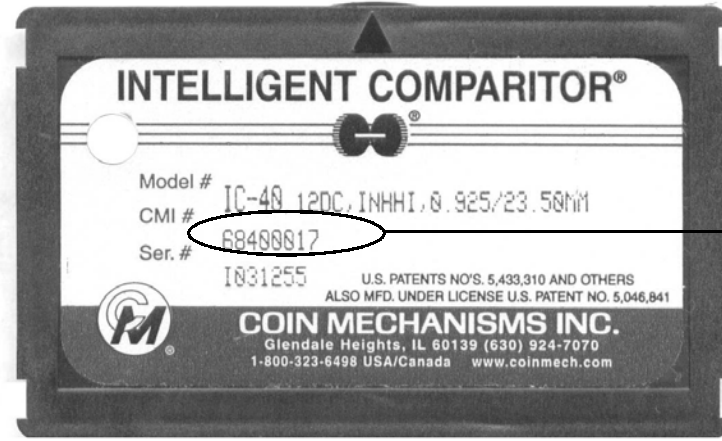
- NOTES:
- SEE INDIVIDUAL BILLS OF MATERIALS FOR VARIABLE SINGLE COMPONENTS INDICATED BY SQUARE BALLONS.
 - SEE INDIVIDUAL BILLS OF MATERIALS FOR HARNESS REQUIREMENTS.



RELEASED; SEE INDIVIDUAL P/N'S FOR REVISION LEVELS		9/11/02 DF	
NO.	ECO NO.	REVISIONS	
DATE/BY		DATE/BY	
COIN MECHANISMS INC. 400 REGENCY DR. GLENDALE HEIGHTS, IL 60139		TOLERANCES NOT SPECIFIED FRACTIONS= ± 1/64 ANGLES= ± 1° .XX= ± .010 .XXX= ± .005 HOLE DIA.= ± .002	
This drawing is the property of and contains proprietary information of Coin Mechanisms Inc. The drawing shall be returned upon request and is not to be copied or disclosed without written authorization and will not be used in any way detrimental to the interest of Coin Mechanisms.		TITLE IC-40/62, P/N IDENTIFICATION	
CRITICAL SYMBOLS ▼ = CUSTOMER ▽ = PROCESS ▾ = BOTH	DRAWN DF APP DWG NO. D0684603	DATE 4/30/02 DATE DATE	FINISH: N/A SHT 1 OF 2
SIZE: D	SCALE: N/A		

TOKEN HOLDER P/N

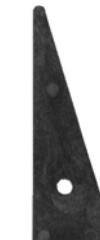
04690059



INTELLIGENT COMPARITOR P/N



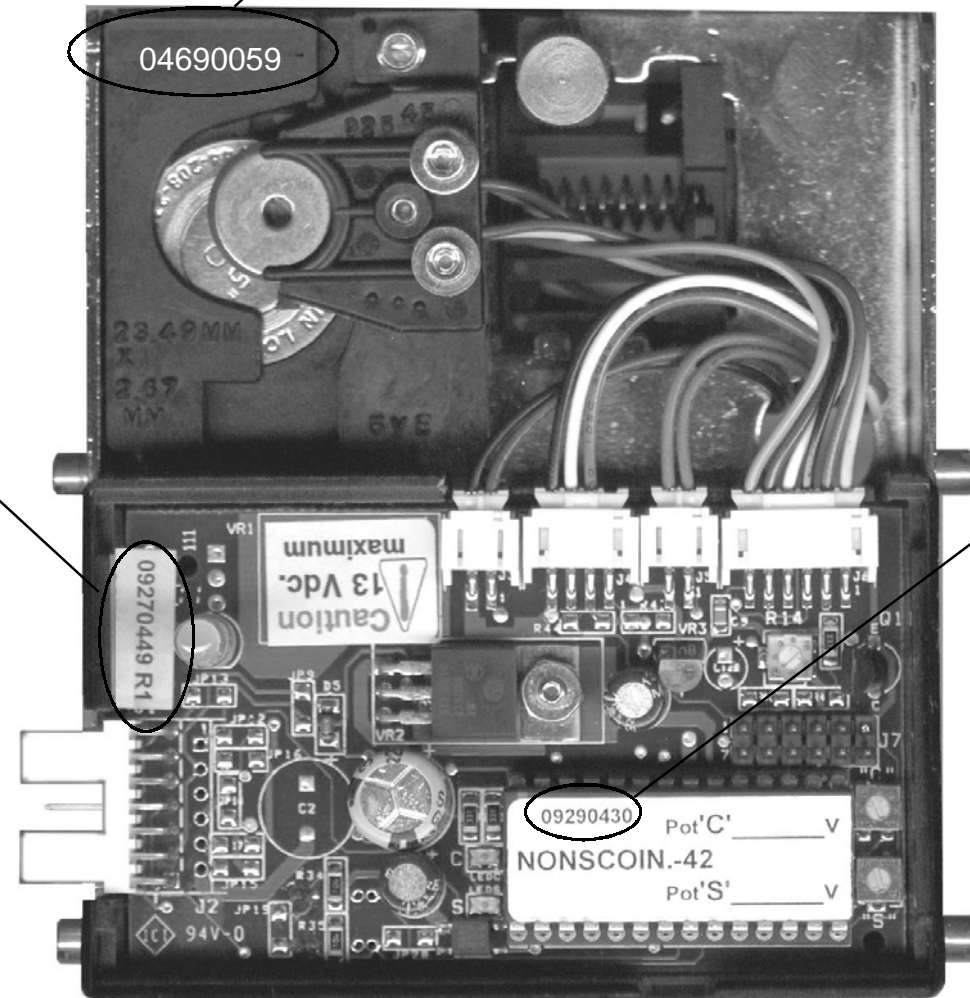
P/N 04660113
 FOR COIN DIAMETERS
 BETWEEN
 1.044" [26.5mm]-1.124" [28.5mm]



P/N 04690406
 FOR COIN DIAMETERS
 BETWEEN
 .898" [22.8mm] -1.043" [26.5mm]

COIN EXIT SPACERS

PCB P/N



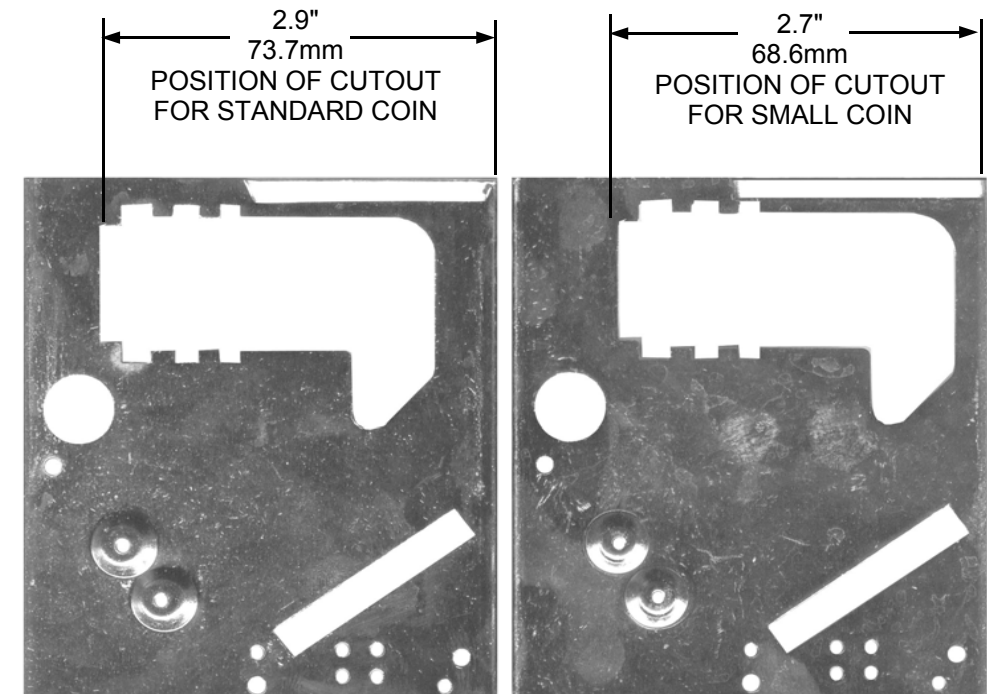
IC WITH COVER REMOVED

MICRO P/N
 (MAY HAVE 0950-000XXX FORMAT)



OPTIC PCB P/N

**OPTIC ASSEMBLY
 (BACK VIEW)**

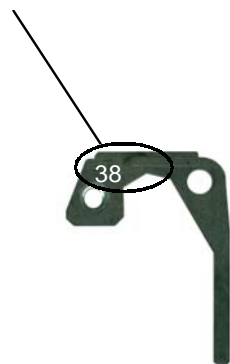


**SENSOR COIL SLOT POSITION ON
 MAINPLATE IN CHASSIS ASSEMBLY**

P/N 06680019-STANDARD COIN
 COIN DIAMETERS
 1.045" [26.5mm] -1.575" [40.0mm]

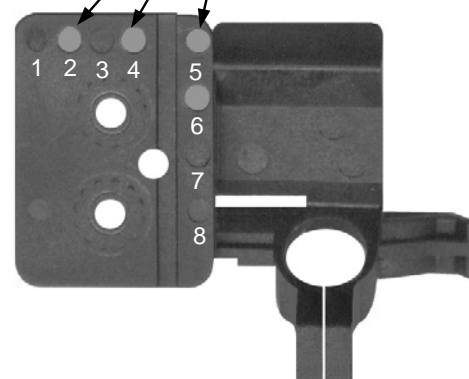
P/N 06680021-SMALL COIN
 COIN DIAMETERS
 .870" [22.1mm] -1.575" [40.0mm]

P/N 05690XXX
 LAST SIGNIFICANT
 DIGITS MOLDED
 ON DAMPER LEVER



DAMPER LEVER

COLOR, PLACEMENT AND
 NUMBER OF DOTS
 IDENTIFIES BARCODE
 HOLDER P/N



BARCODE HOLDER



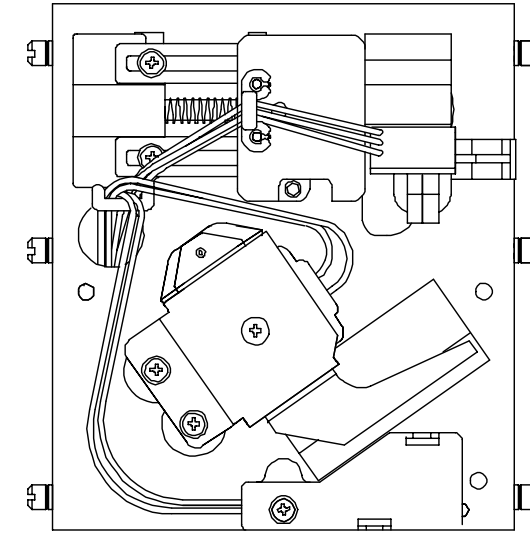
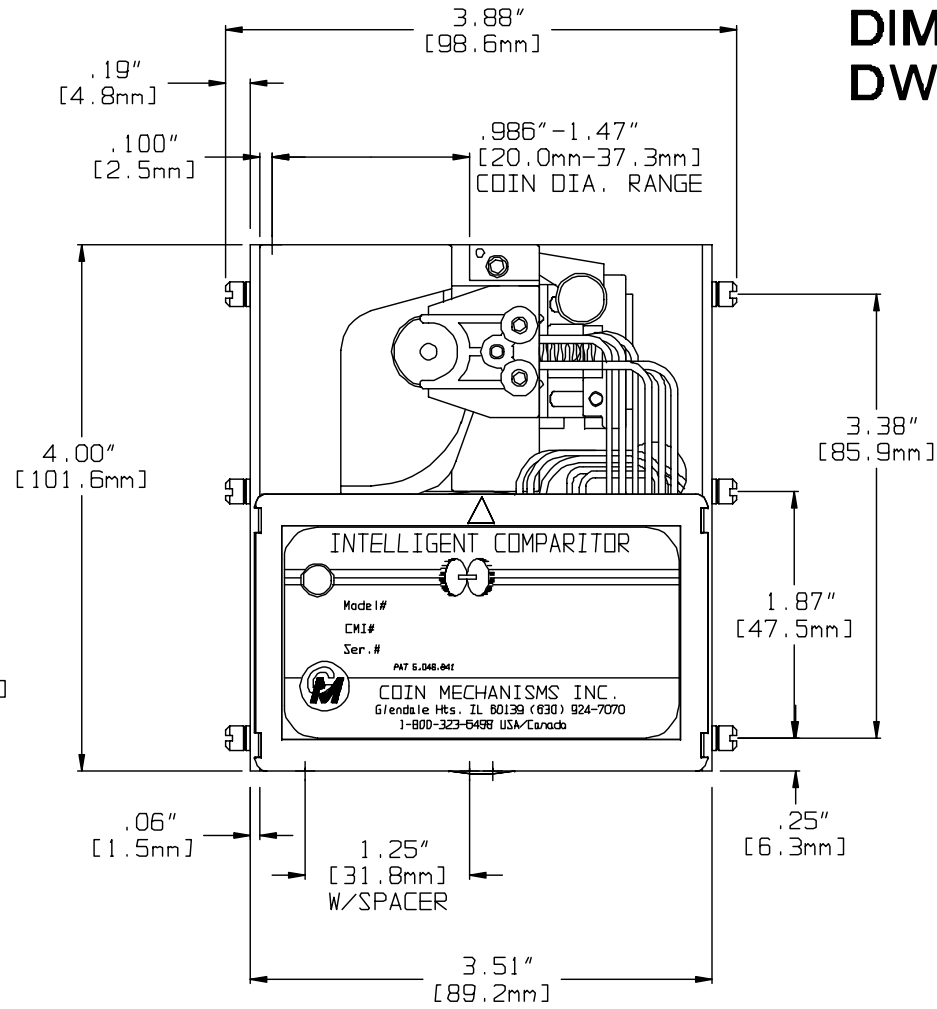
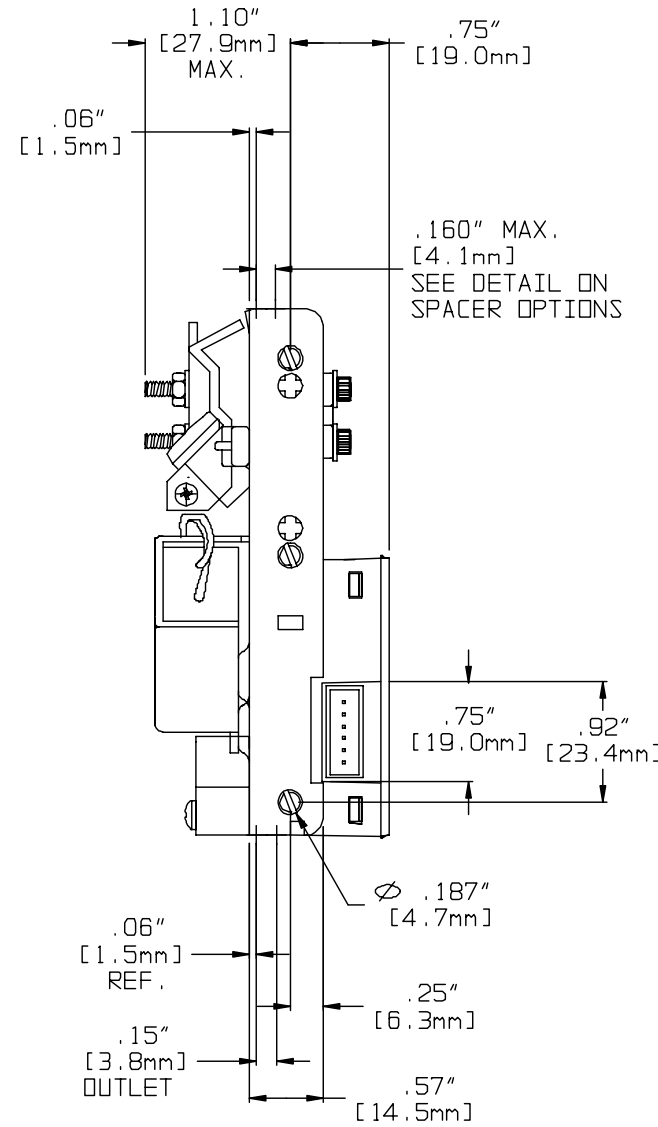
ACCEPT COIL ASSEMBLY

P/N 06250134= GREEN WIRES FOR LOW VOLTAGE (12-13VDC)

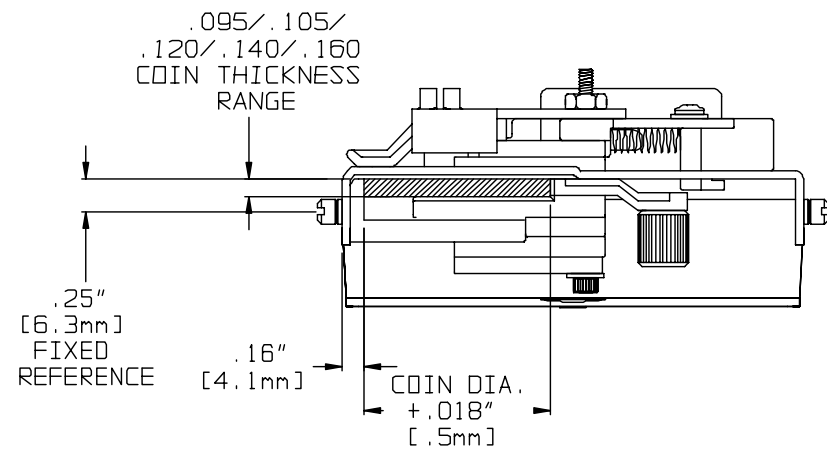
P/N 06250195= GRAY WIRES FOR HIGH VOLTAGE (24VAC)

X X		RELEASED; SEE INDIVIDUAL P/N'S FOR REVISION LEVELS			9/11/02 DF
NO.	ECO NO.	REVISIONS			DATE/BY
COIN MECHANISMS INC. 400 REGENCY DR. GLENDALE HEIGHTS, IL 60139		TOLERANCES NOT SPECIFIED FRACTIONS= ± 1/64 ANGLES= ±1° .XX= ±.010 .XXX= ±.005 HOLE DIA.= ±.002		TITLE IC-40/62 P/N IDENTIFICATION	
This drawing is the property of and contains proprietary information of Coin Mechanisms Inc. The drawing shall be returned upon request and is not to be copied or disclosed without written authorization and will not be used in any way detrimental to the interest of Coin Mechanisms.		CRITICAL SYMBOL 		DRAWN DF	DATE 6/7/02
		FINISH: N/A		SHT 2 OF 2	

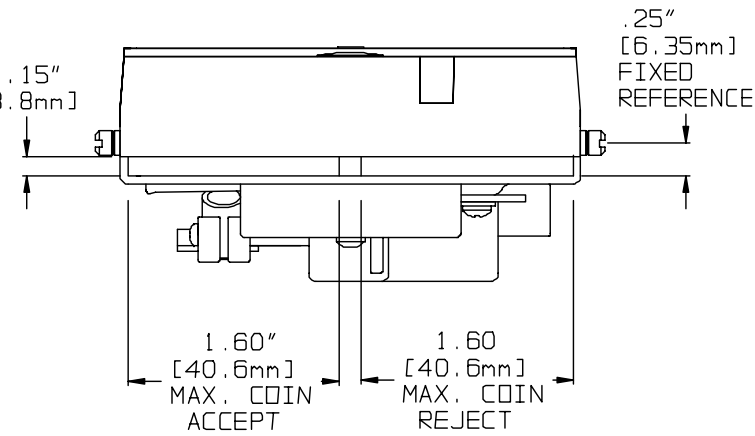
**IC-40/62
SMART MARK
DIMENSIONS
DWG# ENG00106**



BACK VIEW
ROUTING FOR ACCEPT COIL LEADS

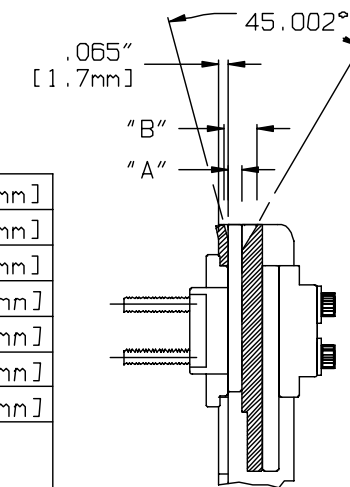


COIN ENTRY



COIN EXIT

.160" [4.1mm]	.310" [7.9mm]
.140" [3.6mm]	.290" [7.4mm]
.120" [3.0mm]	.270" [6.9mm]
.105" [2.7mm]	.255" [6.5mm]
.095" [2.4mm]	.245" [6.2mm]
.082" [2.1mm]	.232" [5.9mm]
.072" [1.8mm]	.222" [5.3mm]
"A" SPACER	"B" ENTRY
SPACER OPTIONS	



COIN MECHANISMS INC.

P.O. Box 5128, Glendale Heights, IL 60139-5128 P/N ENG00106 -5/02
 630/924-7070*1-800/323-6498*FAX 630/924-7088*E-MAIL-coinmech@coinmech.com
 VISIT OUR WEB SITE AT www.coinmech.com