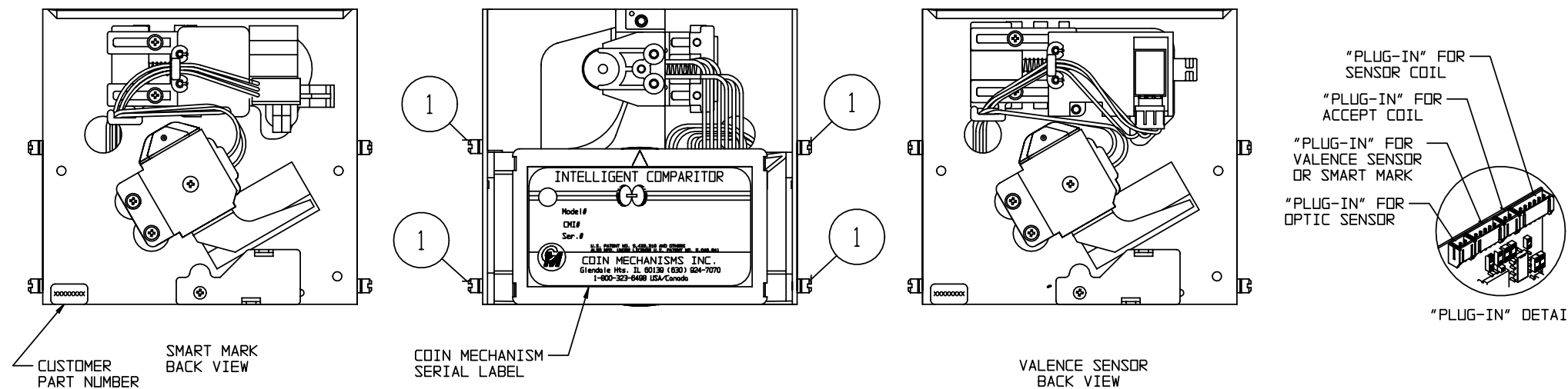


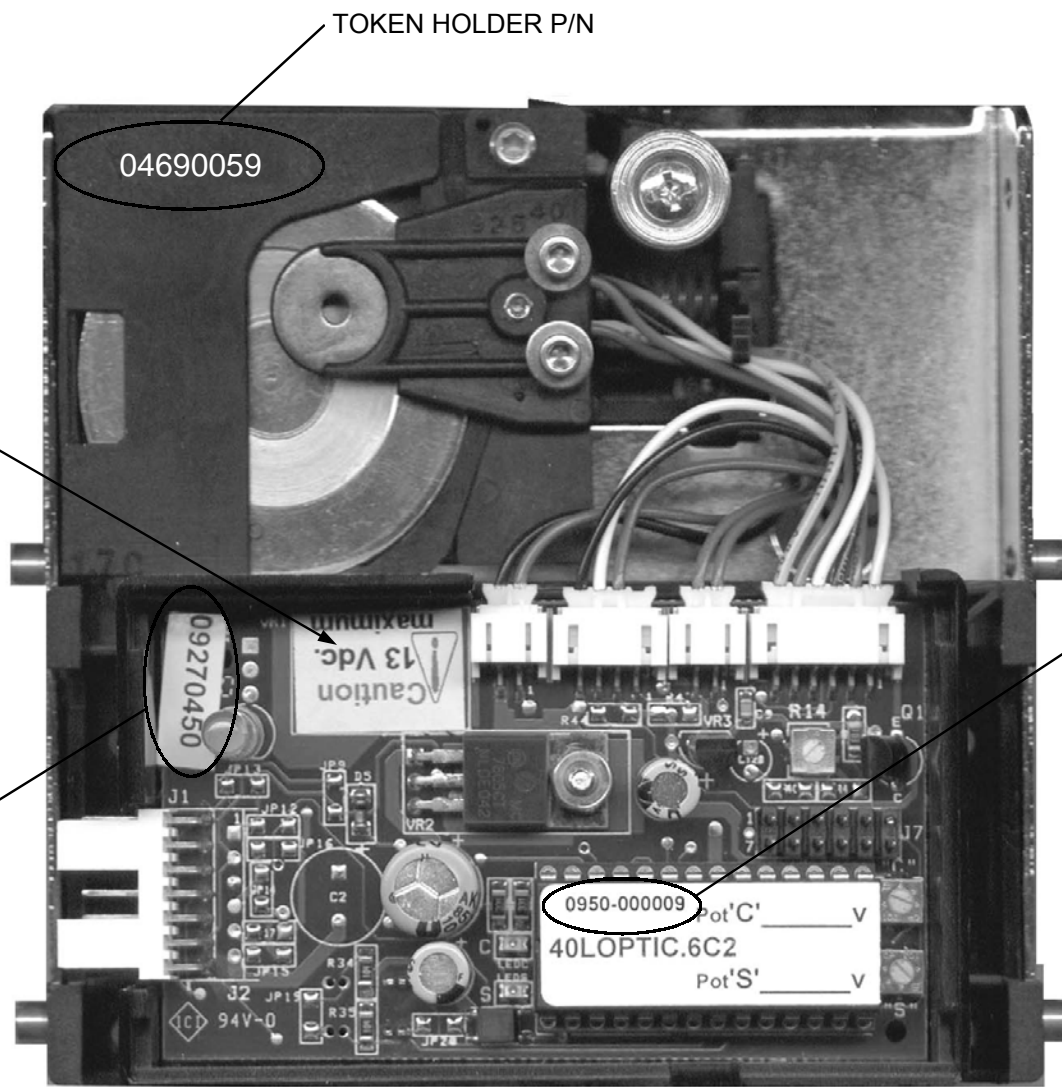
MATERIAL COLUMN			
ITEM	P/N	QTY	MATL' DESCRIPTION
1	04060005-01	4	STUD, #6
2	0406XXXX	1	WEIGHT, DAMPER, (SEE DOCUMENT #09300019)
3	04660034	1	PIN, COIN DEFLECTOR
4	04660165	1	COVER, PCB HSG, UNIVERSAL
5	04690243	A/R	SPACER, IC, .010
6	04690244	A/R	SPACER, IC, .020
7	04690276	1	CLIP, WIRE, BARCODE, IC
8	0469XXXX	1	HOLDER, TKN, IC, (SEE PAGE 2)
9	0469XXXX	1	HOLDER, BC RDR, (SEE PAGE 2)
10	04690104	1	HOLDER, VALENCE READER
11	06250259	1	COIL & BRKT, ASSY, GRN, 4", PHR (SEE PAGE 2)
	06250260	1	COIL & BRKT, ASSY, GRY, 4", PHR (SEE PAGE 2)
12	0625XXXX	1	COIL, ASSY, SENSOR, IC
12A	0569XXXX	—	LEVER, ASSY, DAMPER, IC (SEE PAGE 2)
12B	04690266-01	—	PIN, PIVOT, DAMPER, IC
13	06270045	1	PCB, ASSY, BC RDR, SM, TESTED
14	0627XXXX	1	PCB, ASSY, OPTICS (SEE PAGE 2)
15	06280101	1	HARNESS, VAL, 3 PIN AMP, 4 PIN PHR, RED/BLK/VID, 5.25
16	06680020	1	CHASSIS, IC40/62WB, SALES
17	0665XXXX	1	RETAINER, ASSY, IC,
18	08290208	1	PHOTOINTERRUPTER, REFLECTIVE
19	0927XXXX	1	PCB, CTRL, IC (SEE PAGE 2)
20	0950-000XXXX	1	IC, 87C752, (SEE PAGE 2)
21	436-4	2	NUT, 4-40, HEX, KEPS
22	600-4	1	WASHER, FLAT, #4
23	P-104-4-12	1	SCREW, 4-40 X 3/4, PHIL, PH, MS
24	P-166-6-X	1	SCREW, 6-32 (SEE DOCUMENT #09300019)
25	P-186-4-3	2	SCREW, 4-40 X 3/16, PHIL/SQ, INT SEMS WASHER
26	P-217-2-5	1	SCREW, 2 X 5/16, PHIL, PH, HI-LO

NOTES:

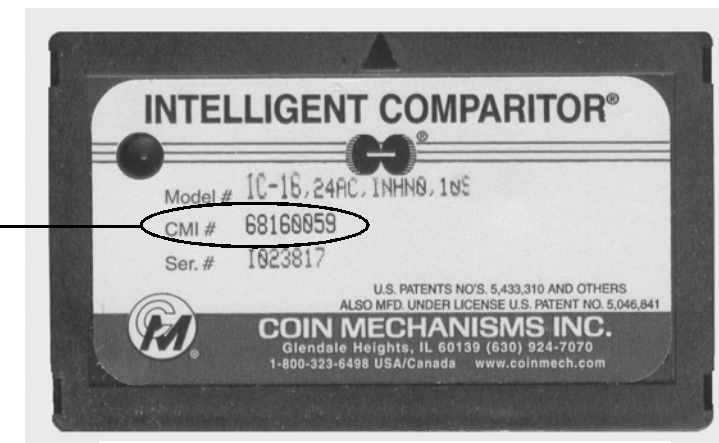
- SEE INDIVIDUAL BILLS OF MATERIALS FOR VARIABLE SINGLE COMPONENTS INDICATED BY SQUARE BALLONS.
- SEE INDIVIDUAL BILLS OF MATERIALS FOR HARNESS REQUIREMENTS.



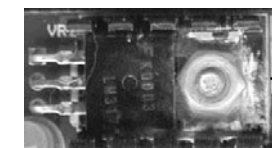
RELEASED; SEE INDIVIDUAL P/N'S FOR REVISION LEVELS		9/12/02
NO.	ECO NO.	DATE/BY
REVISIONS		
TOLERANCES NOT SPECIFIED		
FRACTIONS= ± 1/64		
ANGLES= ± 1°		
.XX= ± 0.10		
.XXX= ± 0.005		
HOLE DIA.= ± 0.002		
TITLE		9/3/02
IC-40/62, WIDE BODY, P/N IDENTIFICATION		DATE
COIN MECHANISMS INC.	400 REGENCY DR.	DATE
GLENDALE HEIGHTS, IL 60139		DATE
CHKD	APP	DWG NO. 00684605
This drawing is the property of and contains proprietary information of Coin Mechanisms Inc. The drawing shall be returned upon request and is not to be copied or disclosed without written authorization and will not be used in any way detrimental to the interest of Coin Mechanisms.		SHT 1 OF 2
CRITICAL SYMBOLS	SCALE: N/A	FINISH: N/A
▼ = CUSTOMER		
▼ = PROCESS		
▼ = BOTH		



IC WITH COVER REMOVED



IC COVER

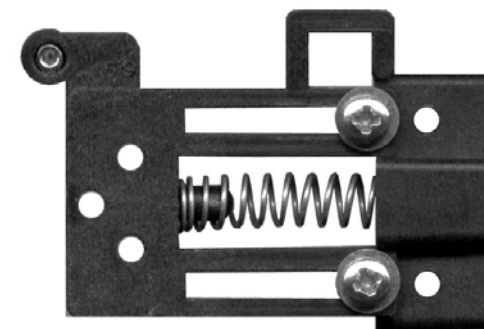


24 VOLT WILL HAVE REGULATOR INSTEAD OF LABEL

INTELLIGENT COMPARITOR P/N

MICRO P/N (MAY HAVE 0927XXXX) FORMAT

PCB P/N



SPRING RETAINER ASSEMBLY

P/N 06650258= FOR COIN DIAMETERS BELOW 1.812" [46.0mm]

P/N 06650269= FOR COIN DIAMETERS 1.812" [46.0mm] AND ABOVE

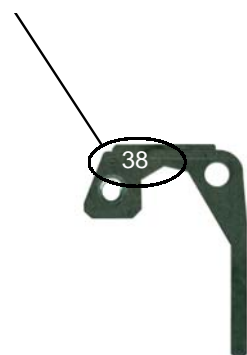


ACCEPT COIL ASSEMBLY

P/N 06250259= GREEN WIRES FOR LOW VOLTAGE (12-13VDC)

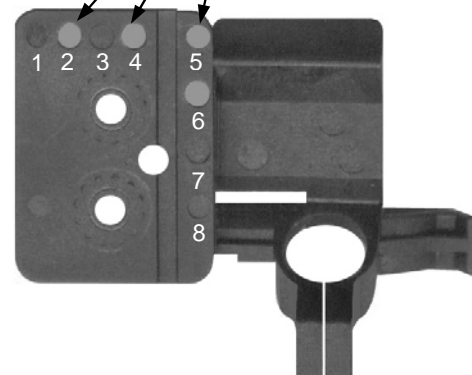
P/N 06250260= GRAY WIRES FOR HIGH VOLTAGE (24VAC)

P/N 05690XXX
LAST SIGNIFICANT DIGITS MOLDED ON DAMPER LEVER



DAMPER LEVER

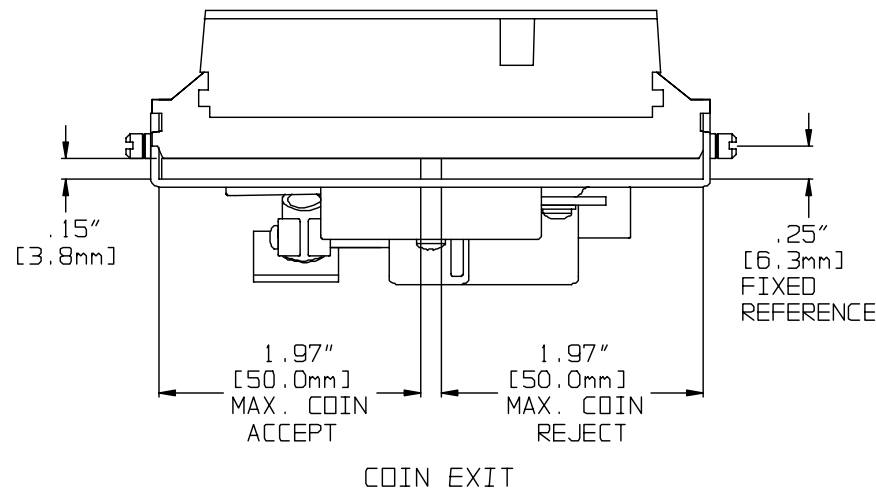
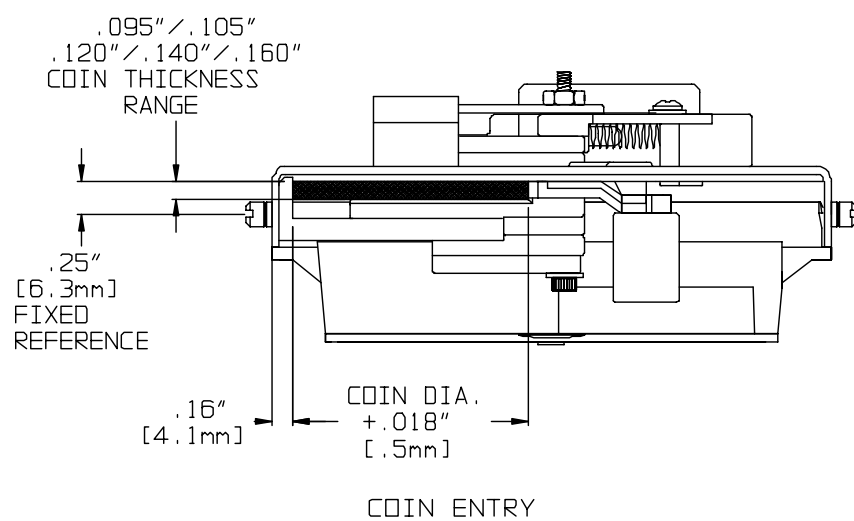
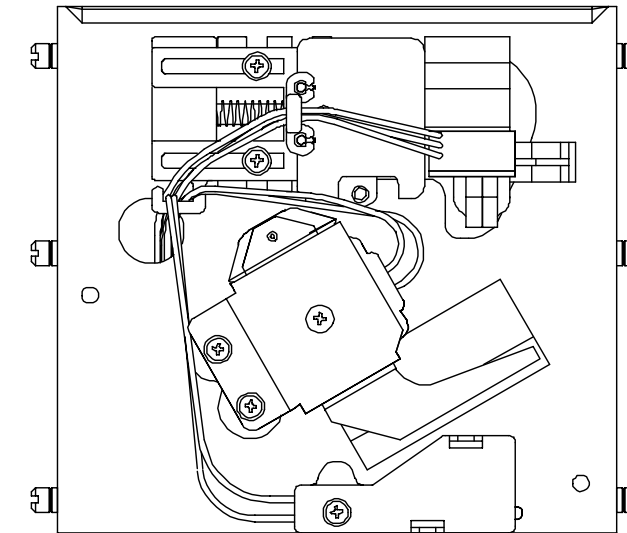
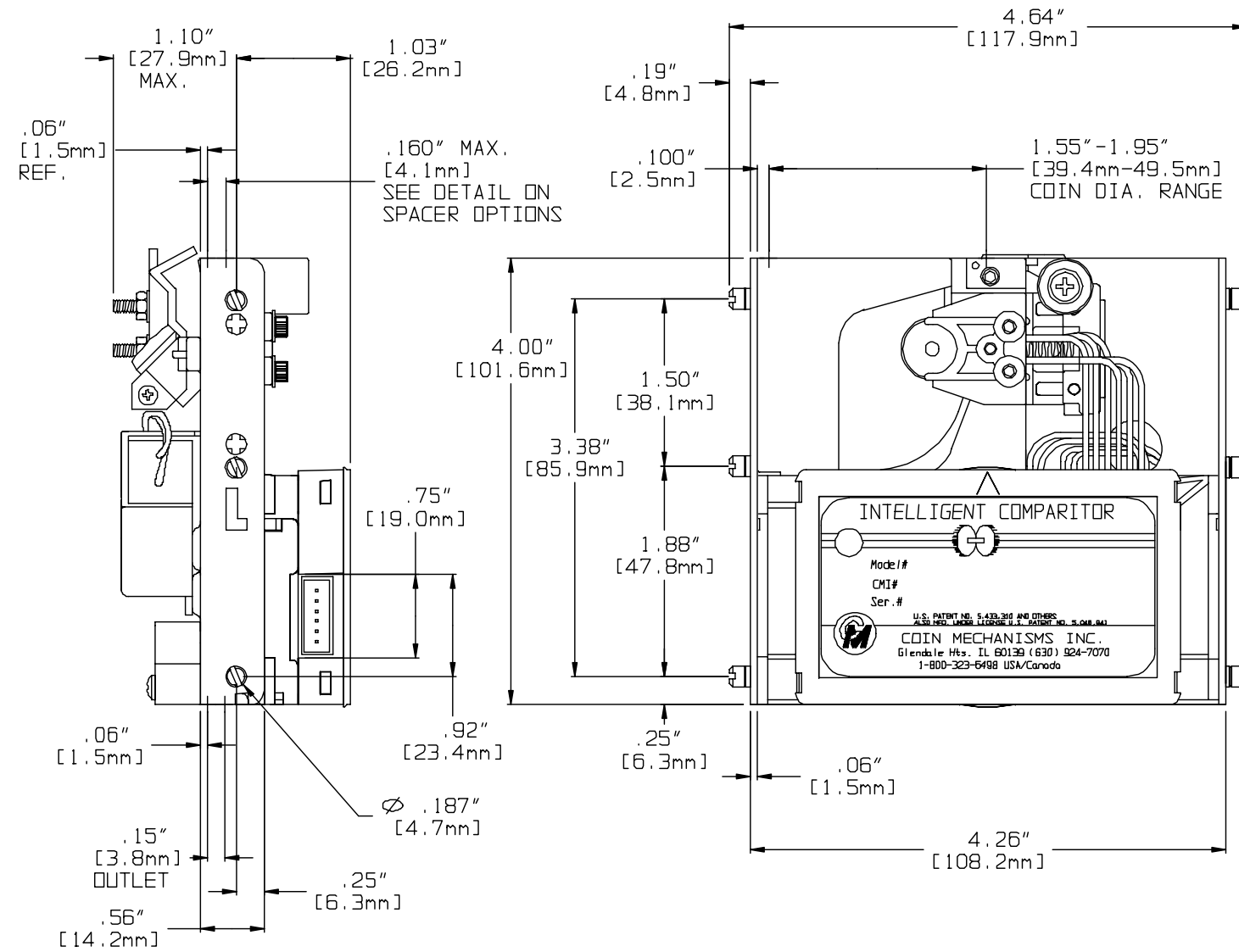
COLOR, PLACEMENT AND NUMBER OF DOTS IDENTIFIES BARCODE HOLDER P/N



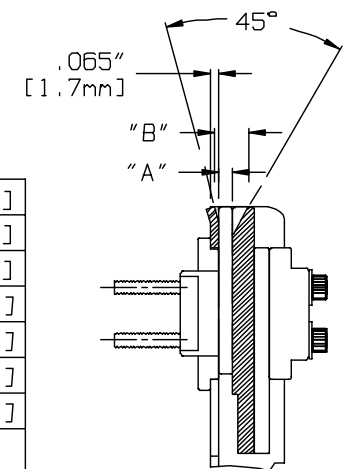
BARCODE HOLDER

X X		RELEASED; SEE INDIVIDUAL P/N'S FOR REVISION LEVELS		9/5/02 DF																				
NO.	ECO NO.	REVISIONS		DATE/BY																				
COIN MECHANISMS INC. 400 REGENCY DR. GLENDALE HEIGHTS, IL 60139		TOLERANCES NOT SPECIFIED FRACTIONS= ± 1/64 ANGLES= ± 1° .XX= ± .010 .XXX= ± .005 HOLE DIA.= ± .002		TITLE IC-40/62 WIDE BODY P/N IDENTIFICATION																				
This drawing is the property of and contains proprietary information of Coin Mechanisms Inc. The drawing shall be returned upon request and is not to be copied or disclosed without written authorization and will not be used in any way detrimental to the interest of Coin Mechanisms.		CRITICAL SYMBOL 		<table border="1"> <tr> <td>DRAWN</td> <td>DF</td> <td>DATE</td> <td>9/5/02</td> </tr> <tr> <td>CHKD</td> <td></td> <td>DATE</td> <td></td> </tr> <tr> <td>APP</td> <td></td> <td>DATE</td> <td></td> </tr> <tr> <td colspan="4">DWG NO. D0684605</td> </tr> <tr> <td>FINISH:</td> <td>N/A</td> <td>SHT</td> <td>2 OF 2</td> </tr> </table>	DRAWN	DF	DATE	9/5/02	CHKD		DATE		APP		DATE		DWG NO. D0684605				FINISH:	N/A	SHT	2 OF 2
DRAWN	DF	DATE	9/5/02																					
CHKD		DATE																						
APP		DATE																						
DWG NO. D0684605																								
FINISH:	N/A	SHT	2 OF 2																					
SIZE:	B	N/A																						

**IC-40WB/62WB
SMART MARK
DIMENSIONS
DWG# ENG00102**



.160" [4.1mm]	.310" [7.9mm]
.140" [3.6mm]	.290" [7.4mm]
.120" [3.0mm]	.270" [6.9mm]
.105" [2.7mm]	.255" [6.5mm]
.095" [2.4mm]	.245" [6.2mm]
.082" [2.1mm]	.232" [5.9mm]
.072" [1.8mm]	.222" [5.3mm]
"A" SPACER	"B" ENTRY
SPACER OPTIONS	



COIN MECHANISMS INC.

P.O. Box 5128, Glendale Heights, IL 60139-5128 P/N ENG00102 -5/02
630/924-7070*1-800/323-6498*FAX 630/924-7088*E-MAIL-coinmech@coinmech.com
VISIT OUR WEB SITE AT www.coinmech.com