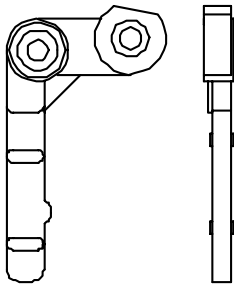
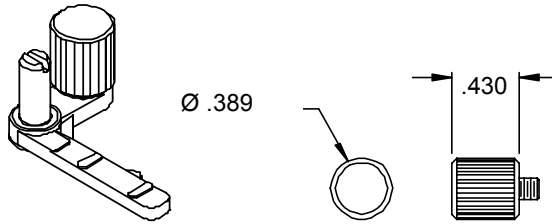


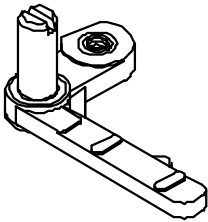
Standard coin damper levers



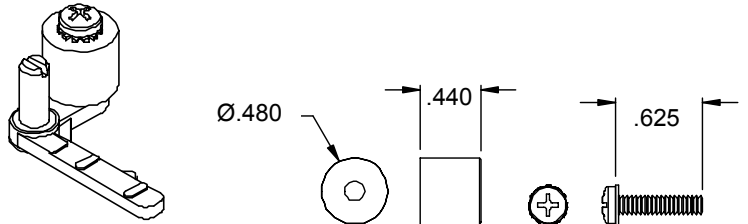
P/N 05660021 (BLACK)
USED ON STANDARD
COIN OR MICRO
COMPARITORS



6.0 GRAM ASSY P/N 04060039-01
P/N 06660013 WEIGHT, DAMPER, 6.0
DAMPER LEVER GRAM - CLEAR FINISH
P/N 05660021

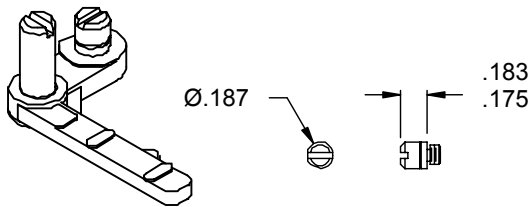


NO WEIGHT
P/N 06660024
DAMPER LEVER
P/N 05660021

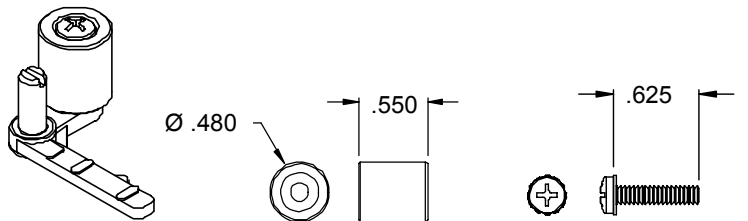


9.0 GRAM ASSY P/N 04060083-02
P/N 06660102 WEIGHT, DAMPER, 9.0 GRAM
DAMPER LEVER YELLOW FINISH
P/N 05660021

P/N P-166-6-10
SCREW, 6-32 X 5/8,
PHIL, PH, W/SEMS

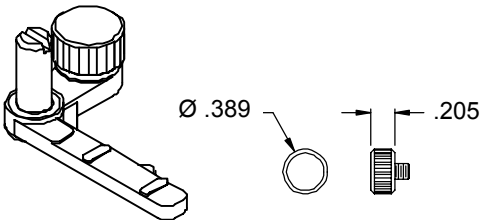


0.7 GRAM ASSY P/N 04060005-01
P/N 06660051 STUD, #6 MTG, 0.7 GRAM
DAMPER LEVER CLEAR FINISH
P/N 05660021

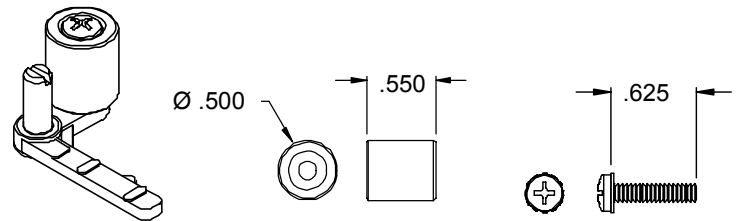


10.6 GRAM ASSY P/N 04060081-02
P/N 06660056 WEIGHT, DAMPER, 10.6 GRAM
DAMPER LEVER YELLOW FINISH
P/N 05660021

P/N P-166-6-10
SCREW, 6-32 X 5/8,
PHIL, PH, W/SEMS

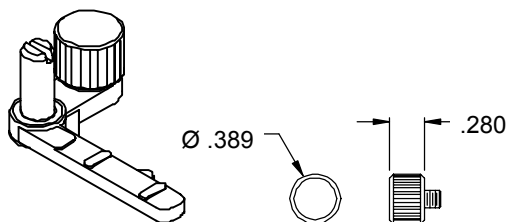


2.6G ASSY P/N 04060038-01
P/N 06660012 WEIGHT, DAMPER, 2.6
DAMPER LEVER GRAM - CLEAR FINISH
P/N 05660021

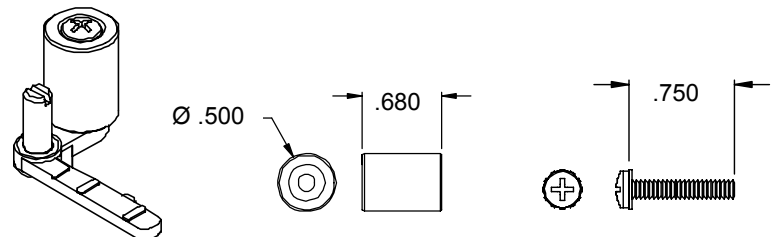


12.0 GRAM ASSY P/N 04060080-02
P/N 06660046 WEIGHT, DAMPER, 12 GRAM
DAMPER LEVER YELLOW FINISH
P/N 05660021

P/N P-166-6-10
SCREW, 6-32 X 5/8,
PHIL, PH, W/SEMS



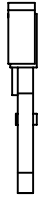
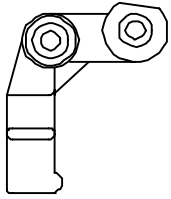
4.0 GRAM ASSY P/N 04060084-02
P/N 06660101 WEIGHT, DAMPER, 4.0
DAMPER LEVER GRAM - YELLOW FINISH
P/N 05660021



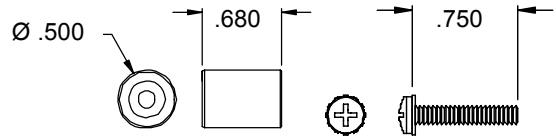
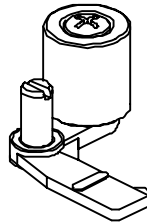
14.2 GRAM ASSY P/N 04060040-01
P/N 06660014 WEIGHT, DAMPER, 14 GRAM
DAMPER LEVER CLEAR FINISH
P/N 05660021

P/N P-166-6-12
SCREW, 6-32 X 3/4,
PHIL, PH, W/SEMS

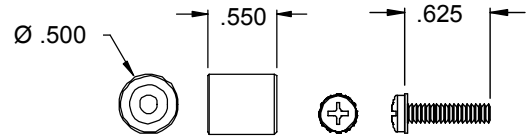
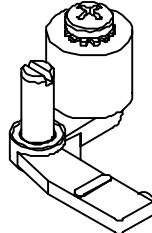
Thick coin damper levers



P/N 05660043 (WHITE)
 USED ON THICK, LARGE
 DIAMETER (GREATER
 THAN Ø1.500")
 COIN OR MICRO
 COMPARITORS
 WB'S, CC-36/37'S

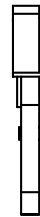
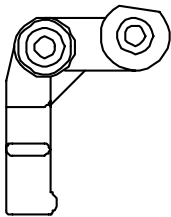


14.2 GRAM ASSY P/N 04060040-01 P/N P-166-6-12
 P/N 06660076 WEIGHT, DAMPER, SCREW, 6-32 X 3/4,
 DAMPER LEVER 14 GRAM PHIL, PH, W/SEMS
 P/N 05660043 CLEAR FINISH

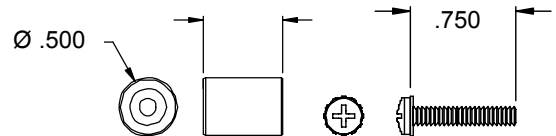
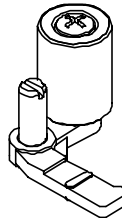


9.0 GRAM ASSY P/N 04060083-02 P/N P-166-6-10
 P/N 06660107 WEIGHT, DAMPER, SCREW, 6-32 X 5/8,
 DAMPER LEVER 9 GRAM PHIL, PH, W/SEMS
 P/N 05660043 YELLOW FINISH

\$1 coin damper levers

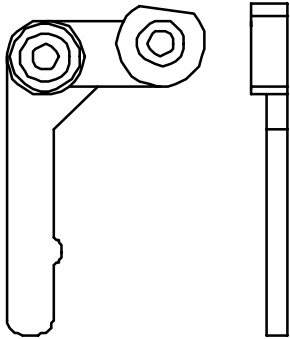


P/N 05660055 (BLACK)
 USED ON U.S. CASINO \$1
 COIN OR MICRO
 COMPARITORS
 CC-16'S, CC-32/33'S, MC'S

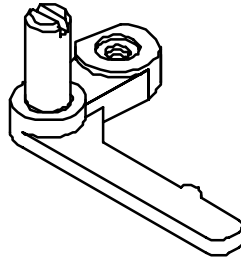


14.2 GRAM ASSY P/N 04060040-01 P/N P-166-6-12
 P/N 06660120 WEIGHT, DAMPER, SCREW, 6-32 X 3/4,
 DAMPER LEVER 14 GRAM PHIL, PH, W/SEMS
 P/N 05660055 CLEAR FINISH

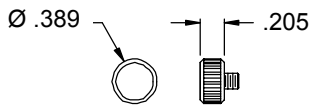
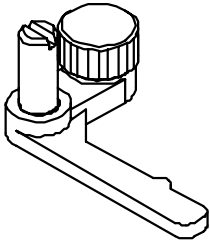
Thin coin damper levers



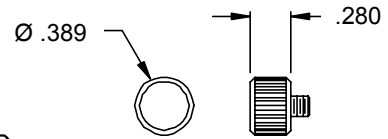
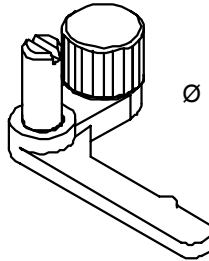
P/N 05660054 (BLACK)
 USED ON *THIN COIN*
 COIN OR MICRO
 COMPARITORS
 5¢, 10¢, 25¢



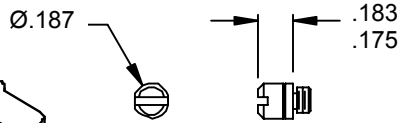
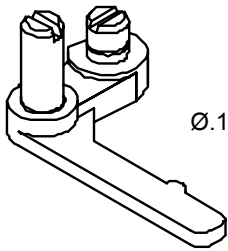
NO WEIGHT
 P/N 06660124
 DAMPER LEVER
 P/N 05660054



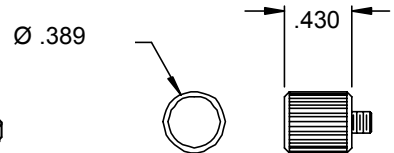
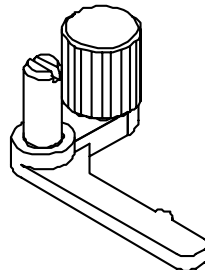
2.6 GRAM ASSY P/N 04060038-01
 P/N 06660111 WEIGHT, DAMPER,
 DAMPER LEVER 2.6 GRAM
 P/N 05660054 CLEAR FINISH



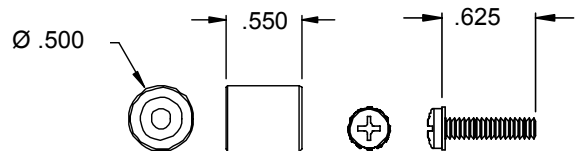
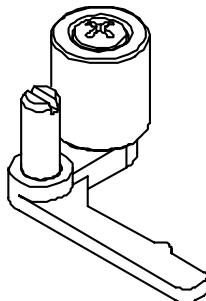
4.0 GRAM ASSY P/N 04060084-02
 P/N 06660117 WEIGHT, DAMPER,
 DAMPER LEVER 4.0 GRAM
 P/N 05660054 YELLOW FINISH



0.7 GRAM ASSY P/N 04060005-01
 P/N 06660122 STUD, #6 MTG, 0.7 GRAM
 DAMPER LEVER CLEAR FINISH
 P/N 05660054



6.0 GRAM ASSY P/N 04060039-01
 P/N 06660115 WEIGHT, DAMPER, 6.0
 DAMPER LEVER GRAM - CLEAR FINISH
 P/N 05660054



9.0 GRAM ASSY P/N 04060083-02 P/N P-166-6-10
 P/N 06660123 WEIGHT, DAMPER, SCREW, 6-32 X 5/8,
 DAMPER LEVER 9 GRAM PHIL, PH, W/SEMS
 P/N 05660054 YELLOW FINISH