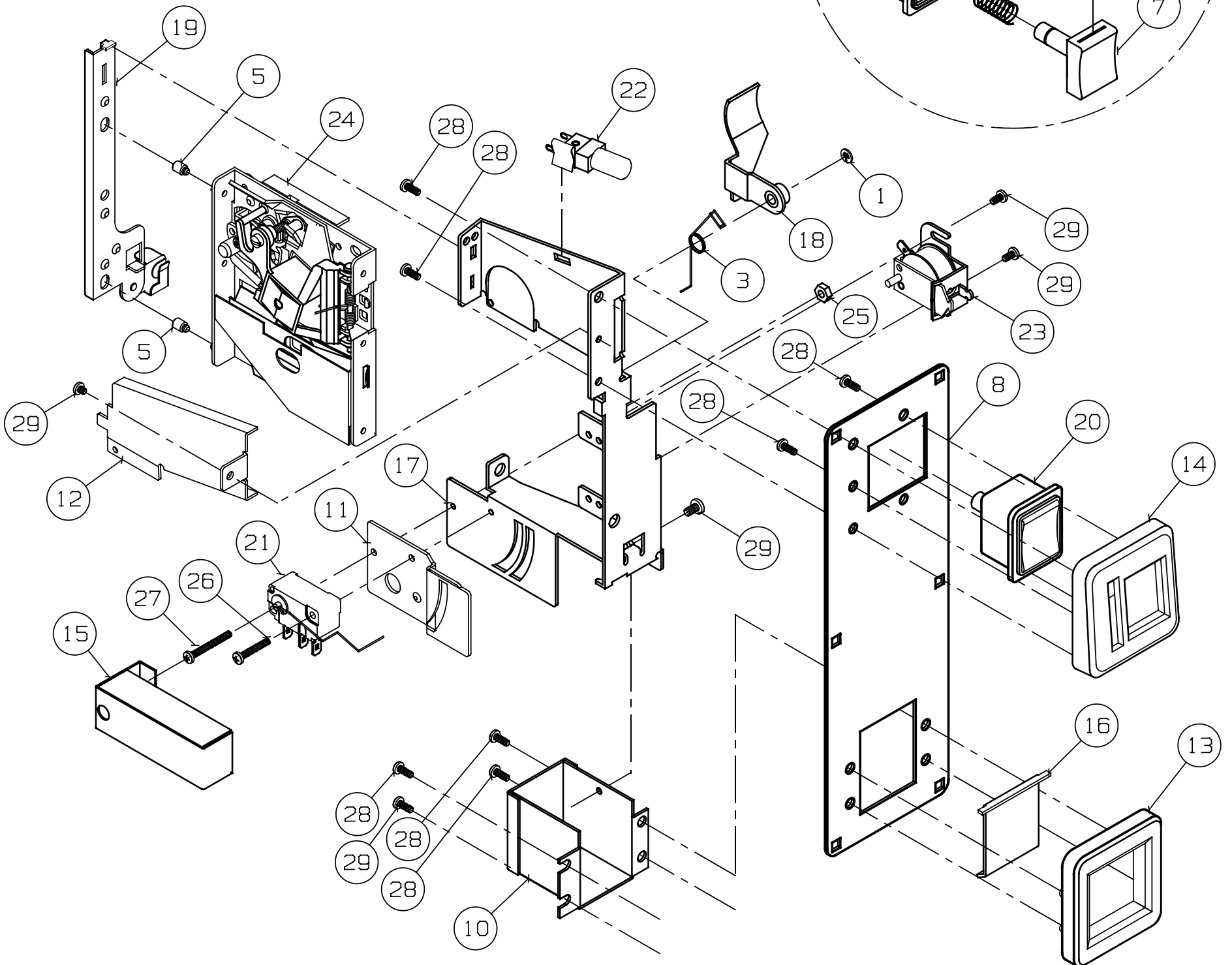


P/N 8001xxxx

SOLD TOGETHER AS A  
BUTTON ASSEMBLY. P/N 06800103-71  
"25C AMBER BUTTON ASSY"



MATERIAL COLUMN

ITEM	P/N	QTY	MATL' DESCRIPTION	ITEM	P/N	QTY	MATL' DESCRIPTION
1	04050016	1	RETAINER, "C" WASHER, 5/32 DIA. PIN	16	04800007-38	1	DR, CUP, COIN RETURN
2	04050018	1	RETAINER, "C" WASHER, 5/16 DIA. PIN	17	05800001	1	BRKT, ASSY, MECH MTG
3	04050036	1	SPRING, TORSION, REJECT LEVER, 80 SERIES	18	05800004	1	LEVER, ASSY, REJECT MOLDED
4	04050037	1	SPRING, REJECT BUTTON RETURN	19	05800015	1	BRKT, ASSY, MECH RETAINING
5	04060005-01	2	STUD, #6 MTG	20	06800103-XX	1	BUTTON, ASSY, (SEE CHART FOR COLOR)
6	04800002-XX	1	HSG, REJECT BUTTON, (SEE CHART FOR COLOR)	21	06800502	1	SW & WIRE, ASSY, BD, 25C, WIRE
7	04800001-XX	1	BUTTON, REJECT, (SEE CHART FOR COLOR)	22	06800040	1	SOCKET ASSY, 14V
8	04800043-XX	1	FP, 3", (SEE CHART FOR COLOR)	23	0825XXXX	1	COIL, CREM, (SPECIFY VOLTAGE)
9	0480XXXX	1	DENOM INS, (SPECIFY TEXT)	24	10XXXXXX	1	MECH, (SPECIFY DENOMINATION)
10	04800008-01	1	CUP, COIN RETURN	25	406-4	1	NUT, 4-40, 3/32 X 1/4, HEX
11	04800011-01	1	CHUTE, SWITCH, 25C	26	P-104-4-12	1	SCREW, 4-40 X 3/4, PHIL, PH, MS
12	04800026-01	1	CHUTE, COIN ENTRY	27	P-104-4-16	1	SCREW, 4-40 X 1, PHIL, PH, MS
13	04800071	1	BEZEL, RETURN CUP, PLASTIC, 2.16	28	P-217-8-6	8	SCREW, 8-3/8, PHIL, PH, HI-LO
14	04800075	1	BEZEL, COIN ENTRY, 25C, 2.16	29	PSQ-216-6-4	4	SCREW, 6-32 X 1/4, PHIL/SQUARE, PH
15	04800086-52	1	COVER, SWITCH, LWR				

- BUTTON COLORS AVAILABLE -  
XX = SPECIFY COLOR  
-71 = AMBER  
-72 = RED

- FACE PLATE COLORS AVAILABLE -  
-37 = FLAT BLACK  
-41 = BLACK RIVER