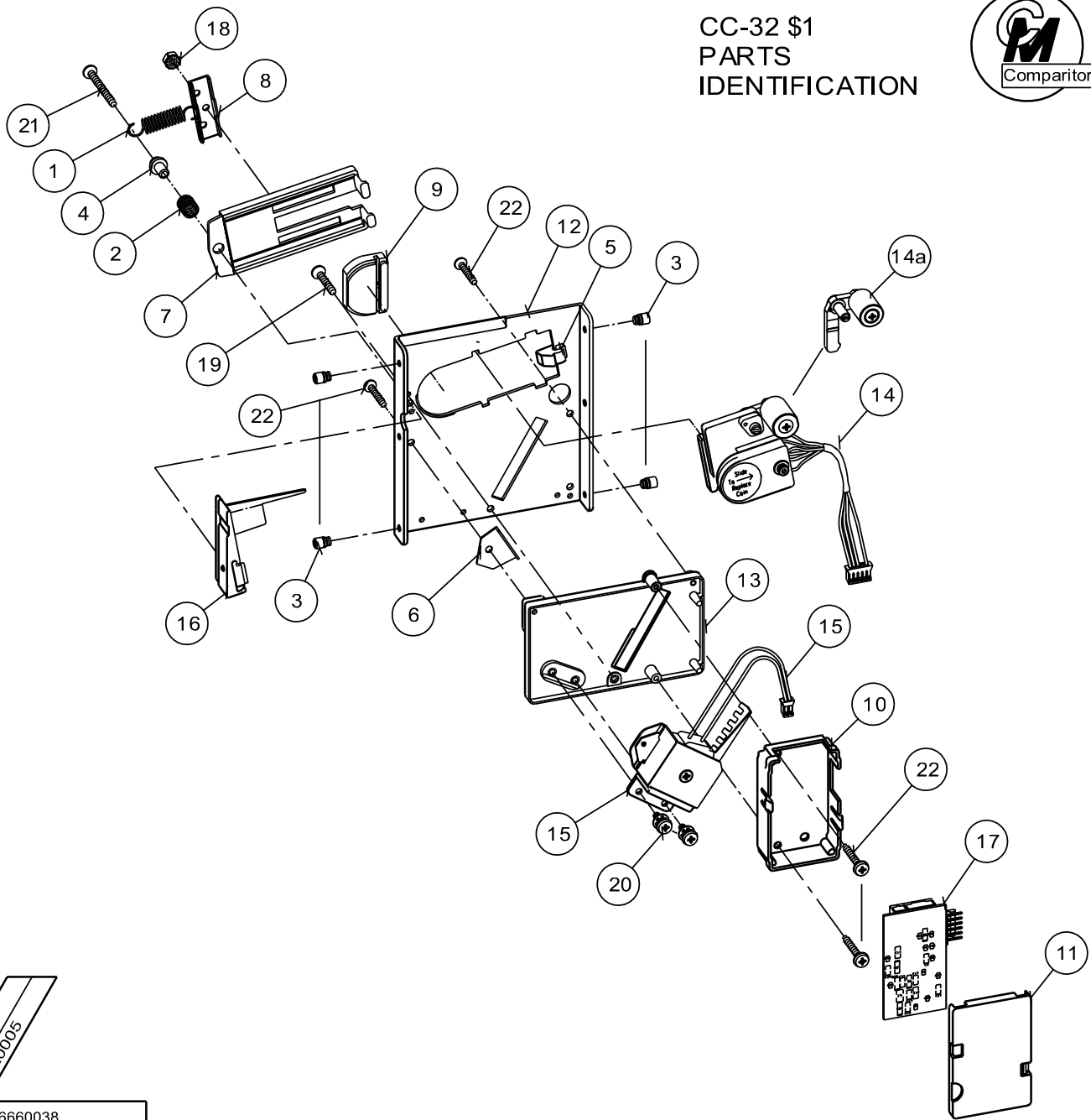


CC-32 \$1  
PARTS  
IDENTIFICATION



ITEM NO.  
66320004  
66320005

16	06660038
	06660022

MATERIAL COLUMN				MATERIAL COLUMN			
ITEM	P/N	QTY	MATL' DESCRIPTION	ITEM	P/N	QTY	MATL' DESCRIPTION
1	04050026	1	SPRING, EXTENSION, 1-3/8, COIL LOCKING	13	05660032	1	COVERPLATE, ASSY, RL
2	04050027	1	SPRING, COMPRESSION, COIL RETAINER	14	06250236	1	COIL, ASSY, SENSOR, CC-32, 14G, THK, 3" LDS
3	04060005-01	4	STUD, #6 MTG	14a	06660120	—	DAMPER & WGT, ASSY, 14.2G, \$1
4	04060052-01	1	BUSHING, SPRING RETAINING	15	06250254	1	COIL & BRKT, ASSY, GRN, 4", PHR, TERM, 3" LDS
5	04660002	1	STOP, SENSING COIL SAFETY	16	0666XXXX	1	RAIL, ASSY,
6	04660177-51	1	BRKT, CC-32/33, RL, DEFLECTING RAMP	17	09270189	1	PCB, CTRL, LS, 13VDC, S13MS, INH, SMT
7	04660030	1	SHIELD, SENSOR COIL RETAINING	18	436-4	1	NUT, 4-40, HEX, KEPS
8	04660062-01	1	BRKT, COIL LOCKING	19	P-104-4-6	1	SCREW, 4-40 X 3/8, PHIL, PH, MS
9	04660121	1	SPACER, PRIMARY SENSING COIL, .258	20	P-186-4-3	2	SCREW, 4-40 X 3/16, PHIL/SQ, INT SEMS WASHER
10	04660142	1	HOUSING, CC-3X, IGT, 13VDC	21	P-221-4-12	1	SCREW, 4 X 3/4, PHIL,
11	04660143	1	COVER, CC-3X, IGT, 13VDC	22	P-221-4-5	4	SCREW, 4 X 5/16, PHIL, TYPE 45, PLASTITE
12	04660144-05	1	MAINPLATE, RL, IGT				



**COIN MECHANISMS INC.**

P.O. Box 5128, Glendale Heights, IL 60139-5128 \*1-800/323-6498\* FAX 630/924-7088  
E-MAIL coinmech@coinmech.com VISIT OUR WEBSITE AT www.coinmech.com